



How to think like a Planner

CRPLAN 2110: Creating Innovative Cities and Regions

January 17, 2017

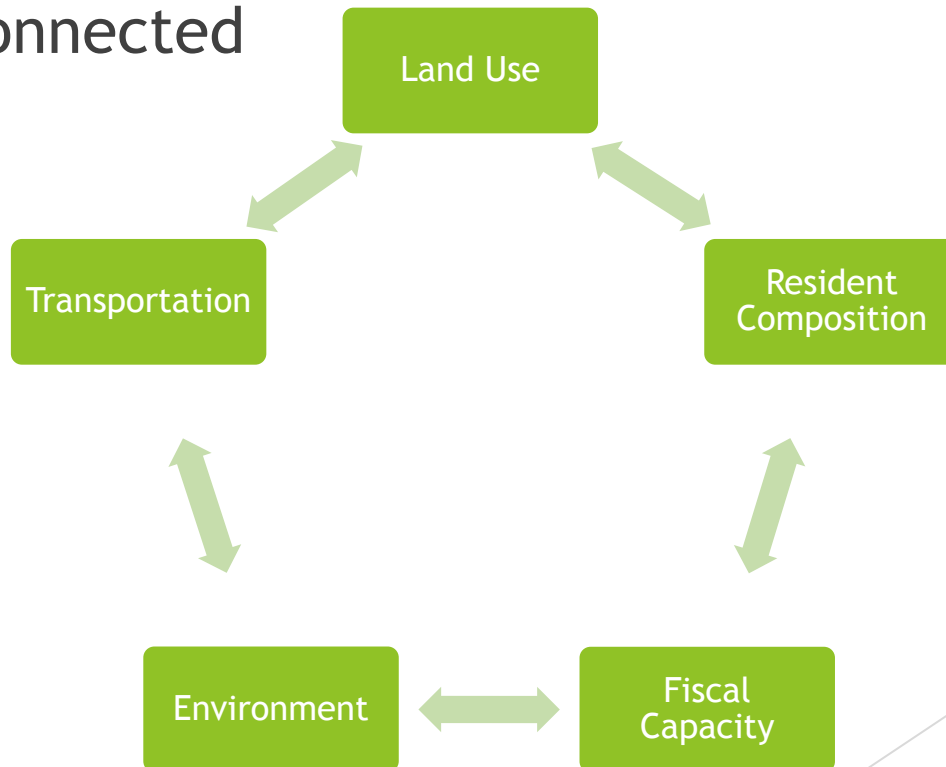
What is Planning?

- ▶ Urban planning, city and regional planning
 - ▶ People & Communities
 - ▶ Choices about the future

- ▶ **A process of**
 - ▶ formulating **goals**,
 - ▶ selecting **alternatives** to achieve the goals, and
 - ▶ implementing the **policies**

Why Do We Need Planning?

- ▶ Ubiquitous
- ▶ Political
- ▶ Interconnected



What Do Planners Do?

- ▶ Shaping growth pattern for a desirable land use pattern



Dalian, China

What Do Planners Do?

- ▶ Preservation and improvement of existing urban fabric



Savannah, GA

What Do Planners Do?

- ▶ Economic development



Source: <http://lciweb.com/ecodev.htm>

What Do Planners Do?

► Environmental Issues



What Do Planners Do?

- ▶ Issues of social justice and equity



Source: <http://handbook.neighborland.com/>

Who are Planners?

- ▶ Come from a variety of backgrounds
 - Architects, landscape architects, lawyers, public officials, statisticians, engineers, writers, or even chemists.
- ▶ Often they are people with formal training in urban planning
- ▶ Work for public or private sectors



Professional/Student Organizations

▶ American Planning Association (APA)

- ▶ *Founded in 1978*
- ▶ *Journal of the American Planning Association (JAPA)*
- ▶ *Planning*



▶ American Institute of Certified Planners (AICP)

- ▶ A combination of educational background and professional experiences to take the AICP exam

▶ City & Regional Planning Student Association (CRPSA)



American Planning Association

We help plan for: FORM

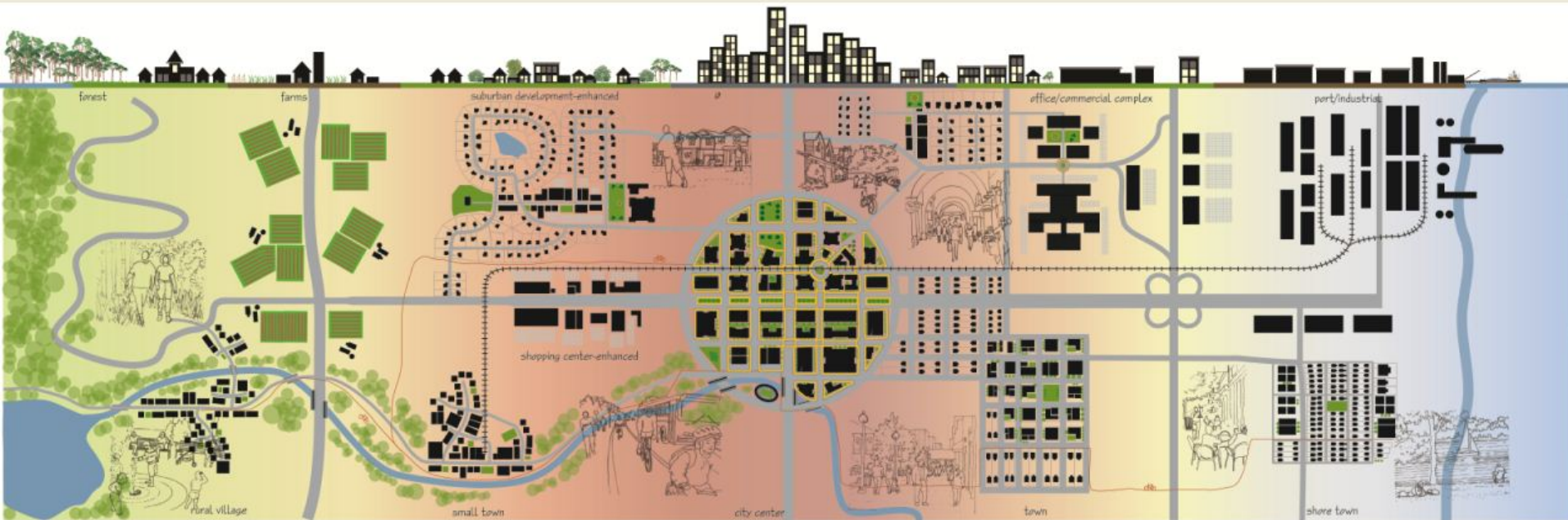
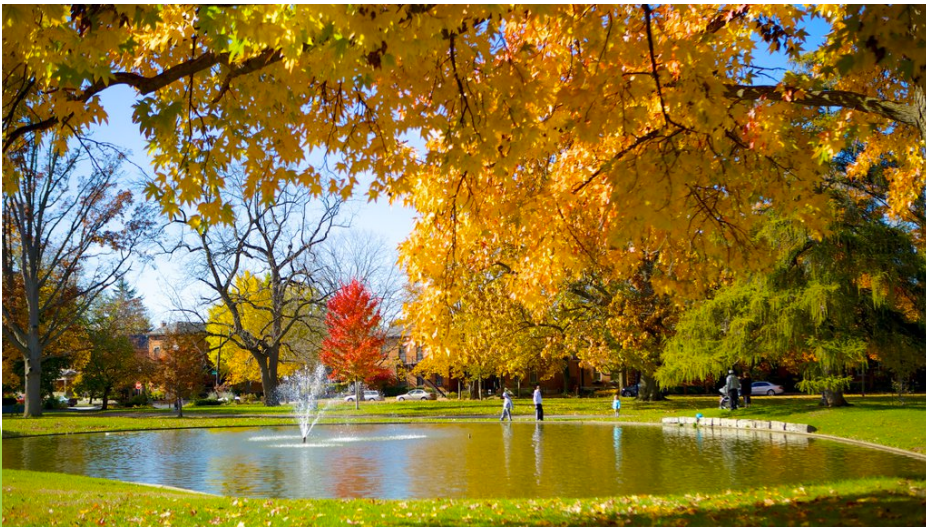


Figure 2: Evolution of street patterns since 1900 showing gradual adaptation to the car (M. Southworth, 1997).

	Gridiron (c. 1900)	Fragmented parallel (c. 1950)	Warped parallel (c. 1960)	Loops and lollipops (c. 1970)	Lollipops on a stick (c. 1980)
Street patterns					

We seek better: DESIGN



SHORT NORTH ARTS DISTRICT IN VICTORIAN VILLAGE

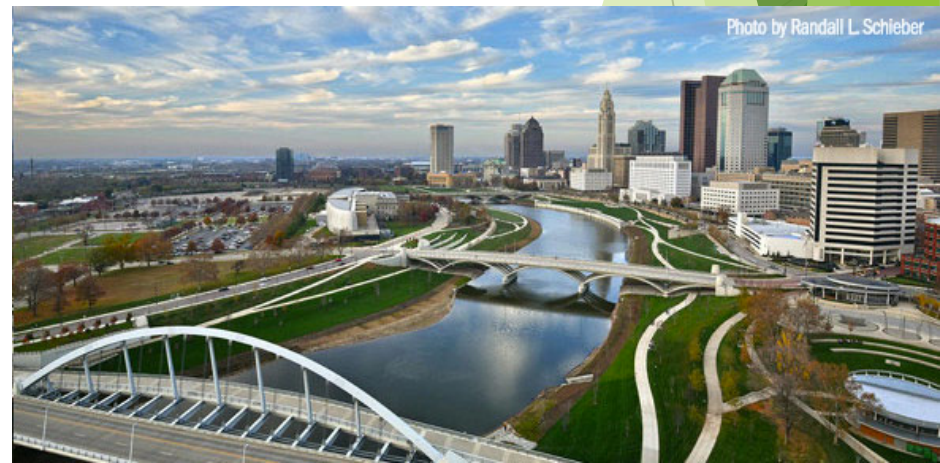


Photo by Randall L. Schieber

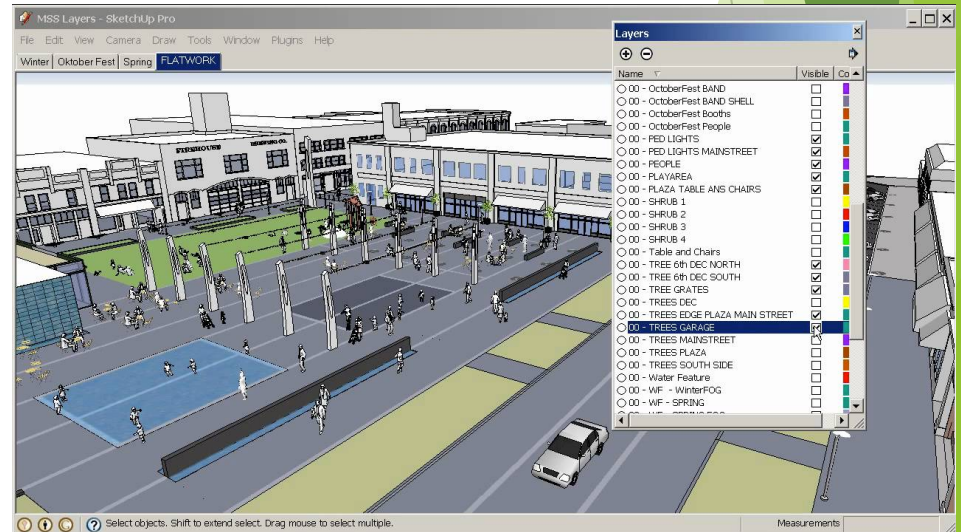
We're experts at: COMMUNICATION



We use TECH to our advantage

► Technology we use

- GIS
- AutoCAD
- Adobe Suite (InDesign, Illustrator, Photoshop)
- Advanced Design Software (Google Sketchup)
- Web Forums (Planetizen)
- Web Meetings (go2meeting)

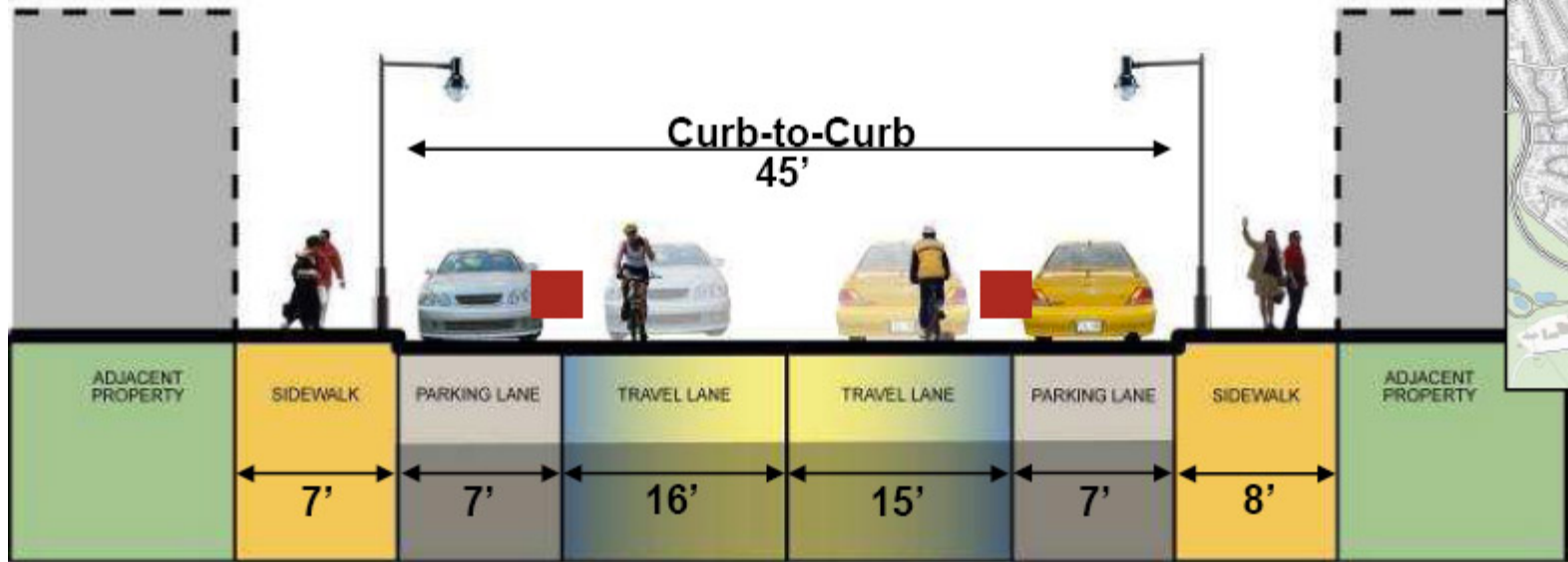


What is Planning - Group Discussion

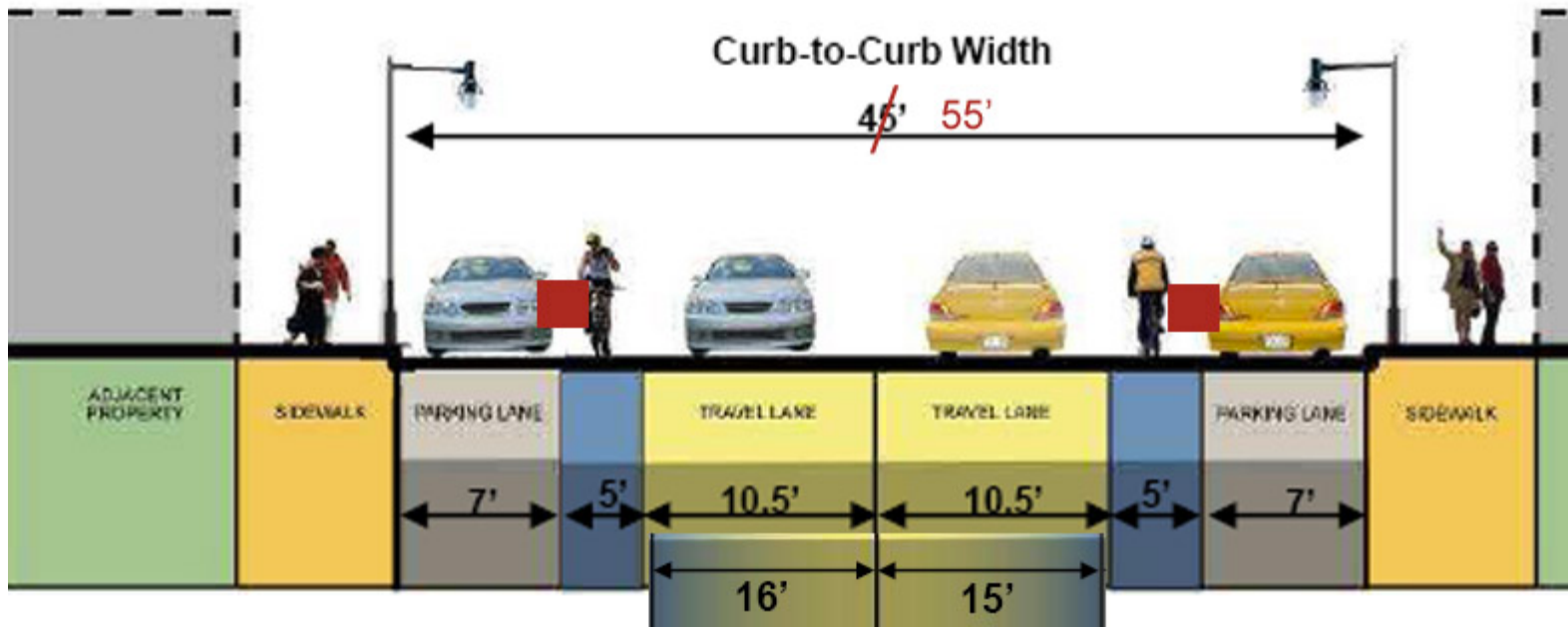
- ▶ Within your group identify the major planning issues you think are important for your home town or Newark. Remember that planning is “problem solving” at its core, so if you are stuck, start with a problem in your community and think of how planning could apply.
- ▶ Do you think there are Urban Planning solutions to the issues you identified? What are they?
- ▶ Compare the issues you each bring up. Are there similarities, differences, common threads?
- ▶ Some of these problems may be used for your final project solution blog or video blog.

Neighborhood Form

The background features abstract, overlapping geometric shapes in various shades of green, ranging from light lime to dark forest green. These shapes are primarily located on the right side of the page, creating a modern, layered effect. The text 'Neighborhood Form' is positioned on the left side of the page, centered vertically relative to the main graphic area.



Shared Lane - Cars + Bikes - Parking Both Sides

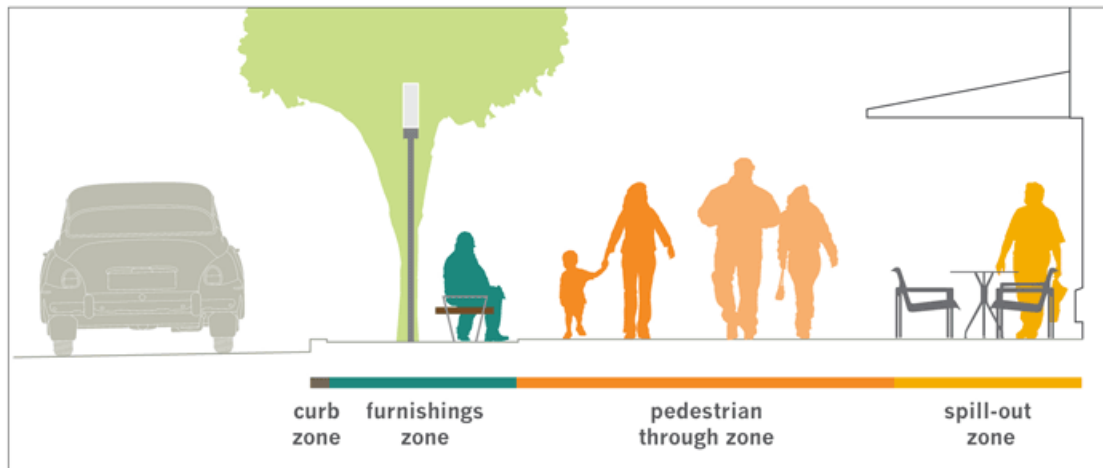


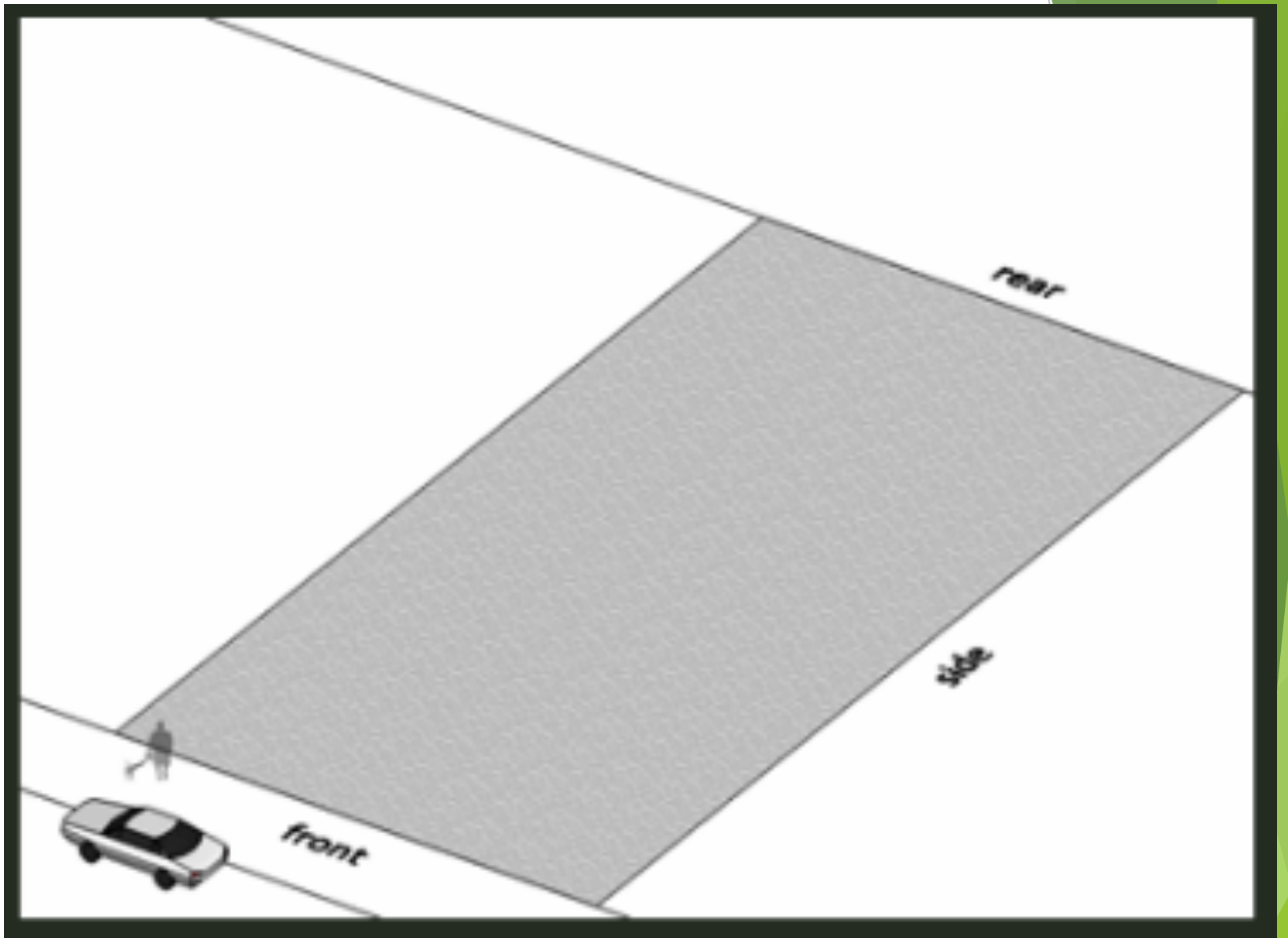


Landscape/Furniture Zone

Pedestrian Zone

Frontage Zone





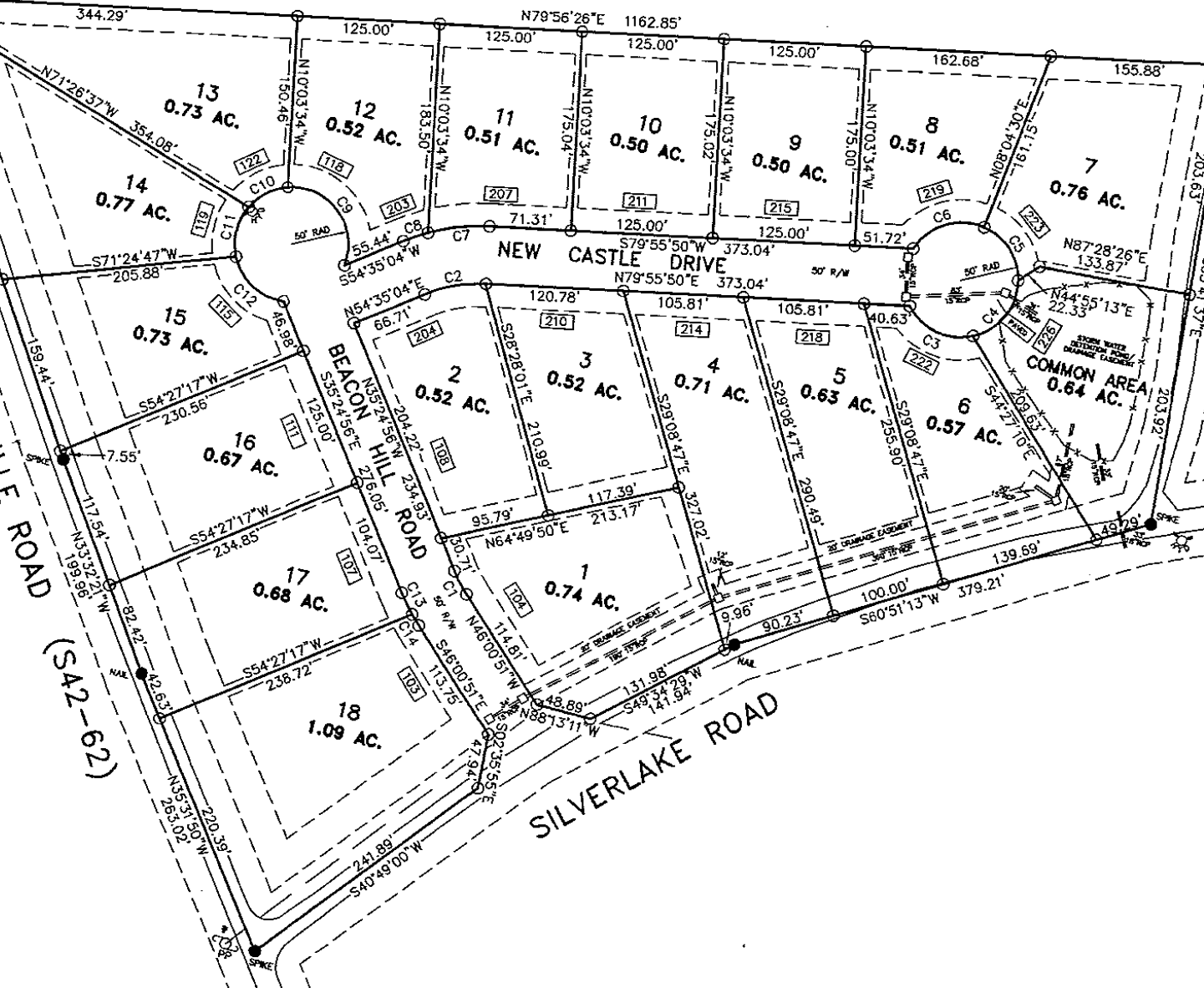
DUNCAN - REIDVILLE ROAD (SA2-62)

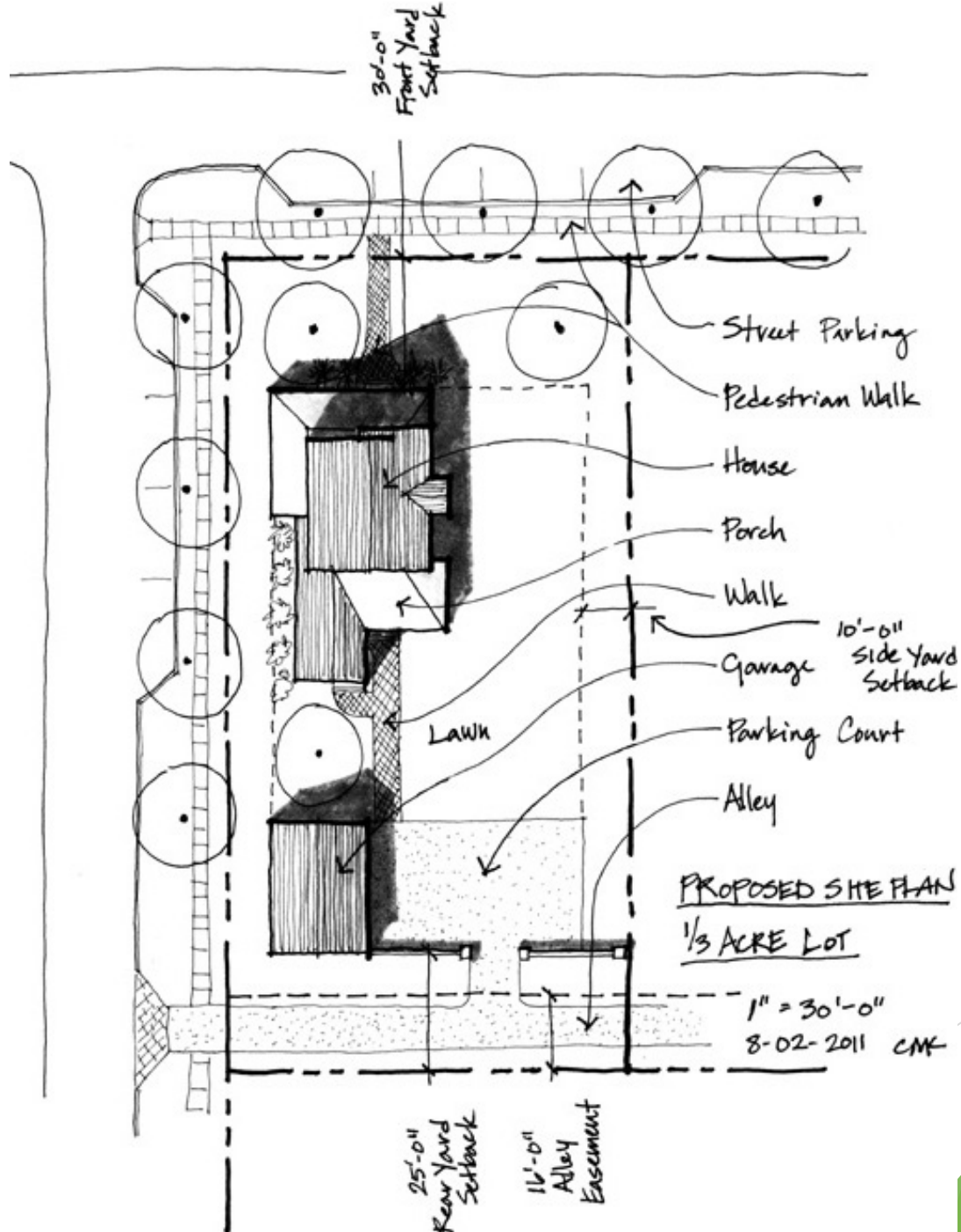
W. LAKEVIEW DRIVE

SILVERLAKE ROAD

NEW CASTLE DRIVE

BEACON HILL ROAD





Group Exercise

- ▶ Thinking of neighborhood form, design your ideal neighborhood
- ▶ Your neighborhood must have:
 - ▶ 25 single-family houses
 - ▶ 5 stores
 - ▶ Streets (as many or few as you choose)
 - ▶ Parks/open spaces
 - ▶ Other planning elements (that you determine)