

Sheep Breeds



Dorset



Rambouillet



Cheviot



Shropshire



Corriedale



Hampshire



Columbia



Suffolk



Finnsheep



Southdown

Sheep Breed Labels

Cheviot

Columbia

Corriedale

Dorset

Finnsheep

Hampshire

Rambouillet

Shropshire

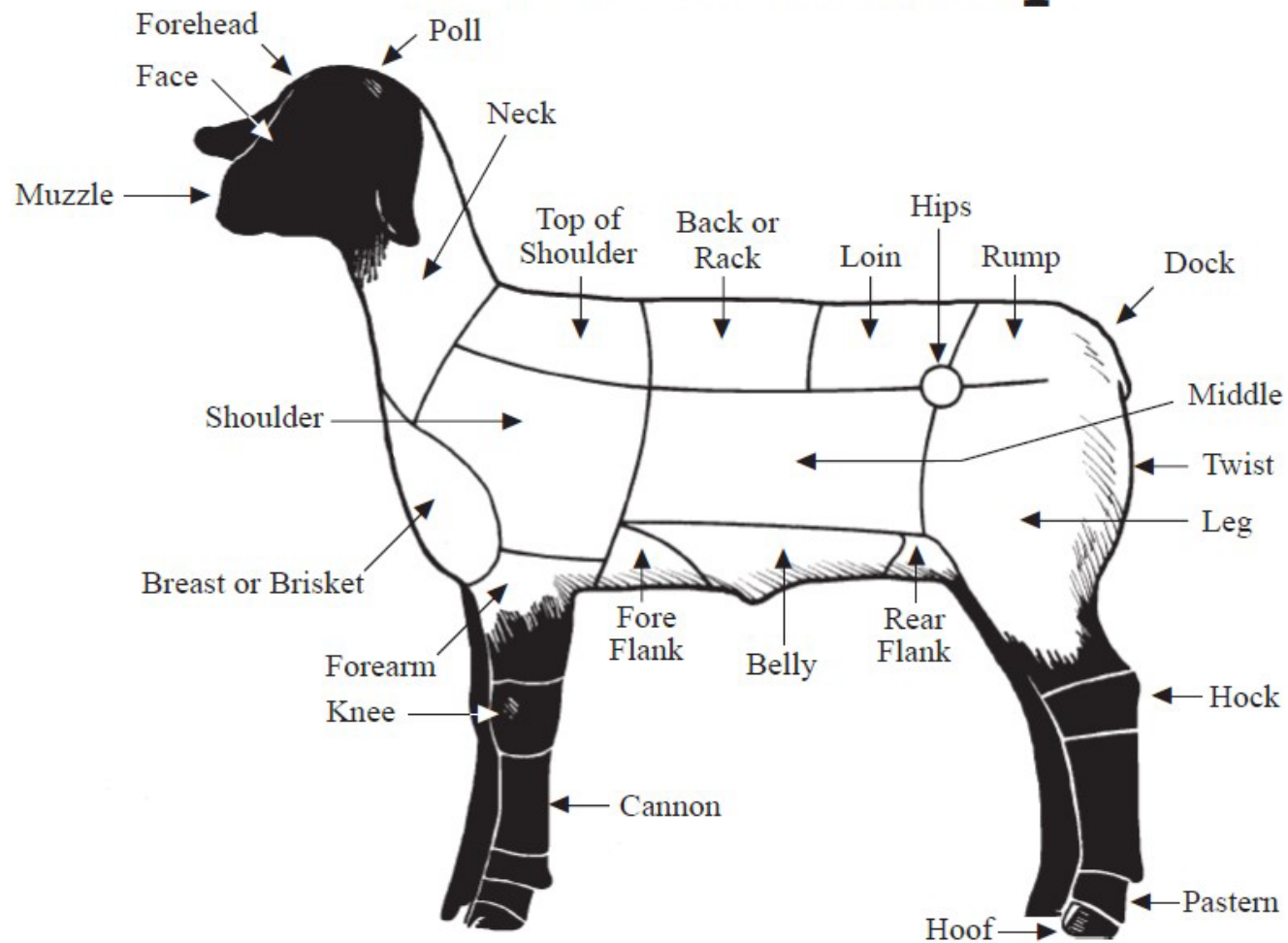
Southdown

Suffolk

Sheep Breeds



Parts of a Sheep



Parts of a Sheep Labels

Back or Rack

Leg

Belly

Loin

Breast or Brisket

Middle

Cannon

Muzzle

Dock

Neck

Face

Pastern

Fore Flank

Poll

Forearm

Rear Flank

Forehead

Rump

Hips

Shoulder

Hock

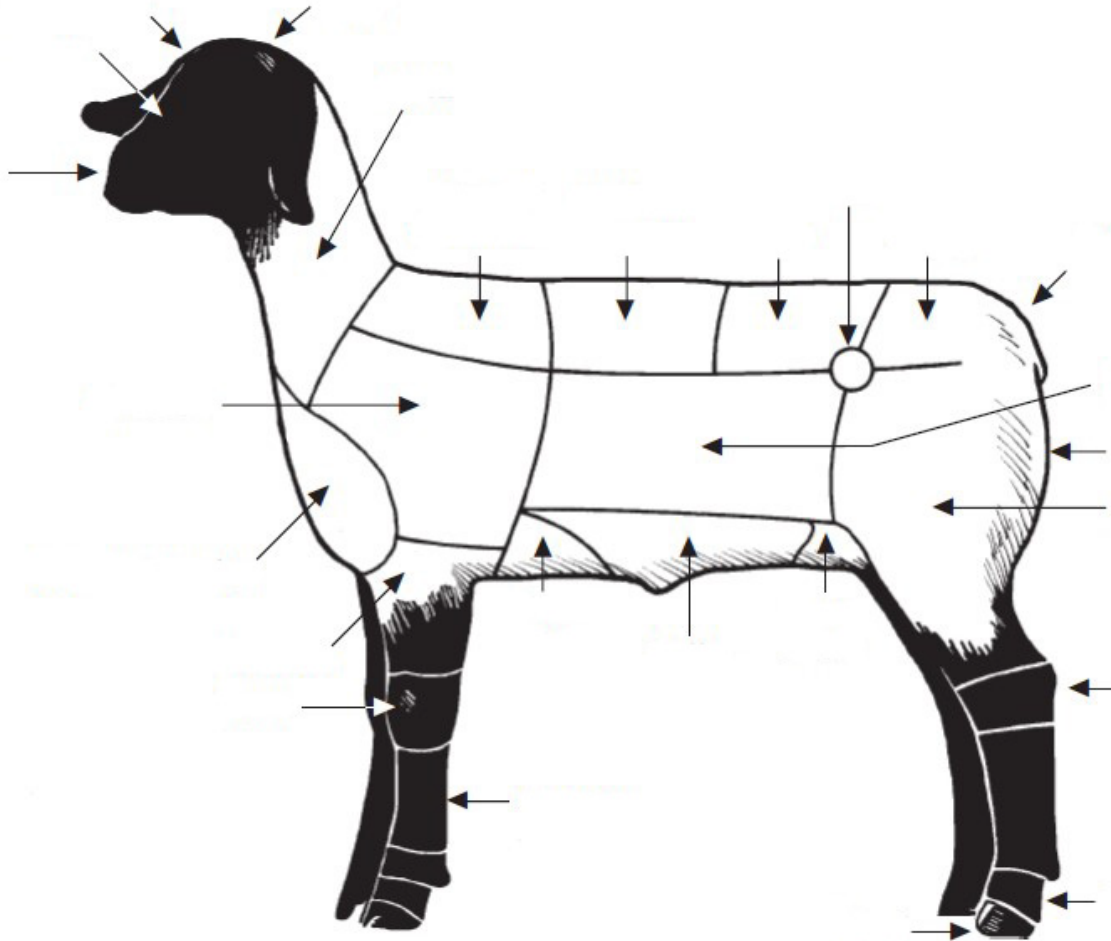
Top of Shoulder

Hoof

Twist

Knee

Parts of a Sheep



Medication Label

Name of Drug _____

OMNIBIOTIC

(hydrocillin) _____

Active Ingredients

Directions for use: See package insert

Cautions
and Warnings _____

Warning: The use of this drug must be discontinued for 30 days before treated animals are slaughtered for food. Exceeding the highest recommended dosage level may result in antibiotic residues in meat or milk beyond the withdrawal time.

Withholding
Times

Store between 2° and 8° C (36° and 46° F) _____

Storage

Keep dry and keep away from light

Quantity
of Contents _____

Net Contents: 100 ml



Distributed by

USA Animal Health, Inc. _____

Name of Distributor

Medication Label Labels

Active Ingredients

Cautions and Warnings

Name of Distributor

Name of Drug

Quantity of Contents

Storage

Withholding Times

Medication Label

_____ **OMNIBIOTIC**

(hydrocillin) _____

Directions for use: See package insert

— { **Warning:** The use of this drug must be discontinued for 30 days before treated animals _____ are slaughtered for food. Exceeding the highest recommended dosage level may result in antibiotic residues in meat or milk beyond the withdrawal time.

Store between 2° and 8° C (36° and 46° F) _____

Keep dry and keep away from light

_____ **Net Contents: 100 ml**

Distributed by

USA Animal Health, Inc. _____



Types of Sheep Questions for Skillathon

Beginner

1. Breeds
2. Expenses
3. Housing
4. Feed
5. Parasites
6. Preparing for the Fair

Intermediate

1. Selection
2. Feed
3. Handling
4. Preparing for the Fair
5. Identification

Advanced

1. Yields
2. Feed
3. Housing
4. Marketing
5. Care