

Rabbit Breeds



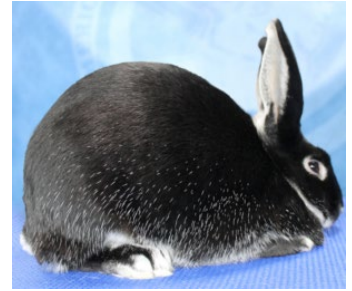
Belgian Hare



Cinnamon



English Angora



Silver Marten



Tan



American Sable



Giant Chinchilla



Californian



Beveren



Dwarf Hotot



Standard Chinchilla



Dutch



American
Fuzzy Lop



Crème d'Argent



Harlequin



New Zealand

Rabbit Breeds



Britannia Petite



Havana



Giant Angora



Champagne d'Argent



Silver



Checkered Giant



French Lop



Netherland Dwarf



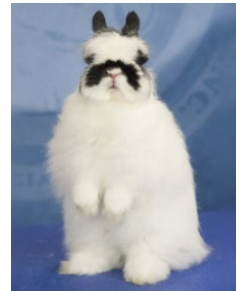
Satin



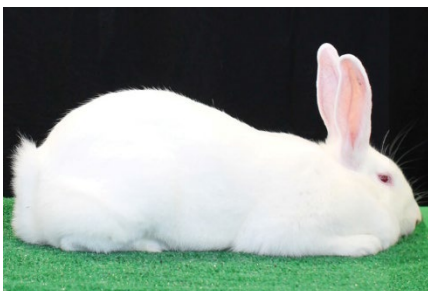
Mini Rex



English Lop



Jersey Wooly



American



Lilac



Rhinelander



Polish

Rabbit Breeds



Satin Angora



English Spot



Mini Lop



American Chinchilla



Rex



Hotot



Silver Fox



Flemish Giant



Himalayan



Palomino



Florida White



Holland Lop



French Angora

Rabbit Breed Labels

American Chinchilla

American Fuzzy Lop

American Sable

American

Belgian Hare

Beveren

Britannia Petite

Californian

Champagne d'Argent

Checkered Giant

Cinnamon

Crème d'Argent

Dutch

Dwarf Hotot

English Angora

English Lop

English Spot

Flemish Giant

Florida White

French Angora

French Lop

Giant Angora

Giant Chinchilla

Harlequin

Havana

Himalayan

Holland Lop

Hotot

Jersey Wooly

Lilac

Mini Lop

Mini Rex

Netherland Dwarf

New Zealand

Palomino

Polish

Rex

Rhineland

Satin Angora

Satin

Silver Fox

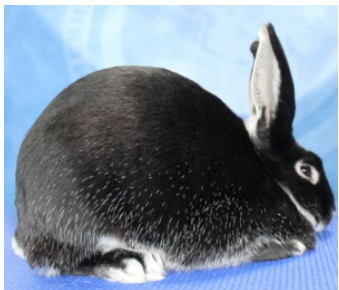
Silver Marten

Silver

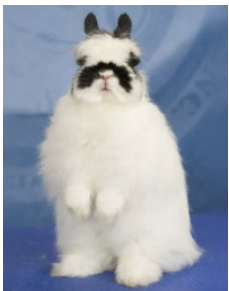
Standard Chinchilla

Tan

Rabbit Breeds



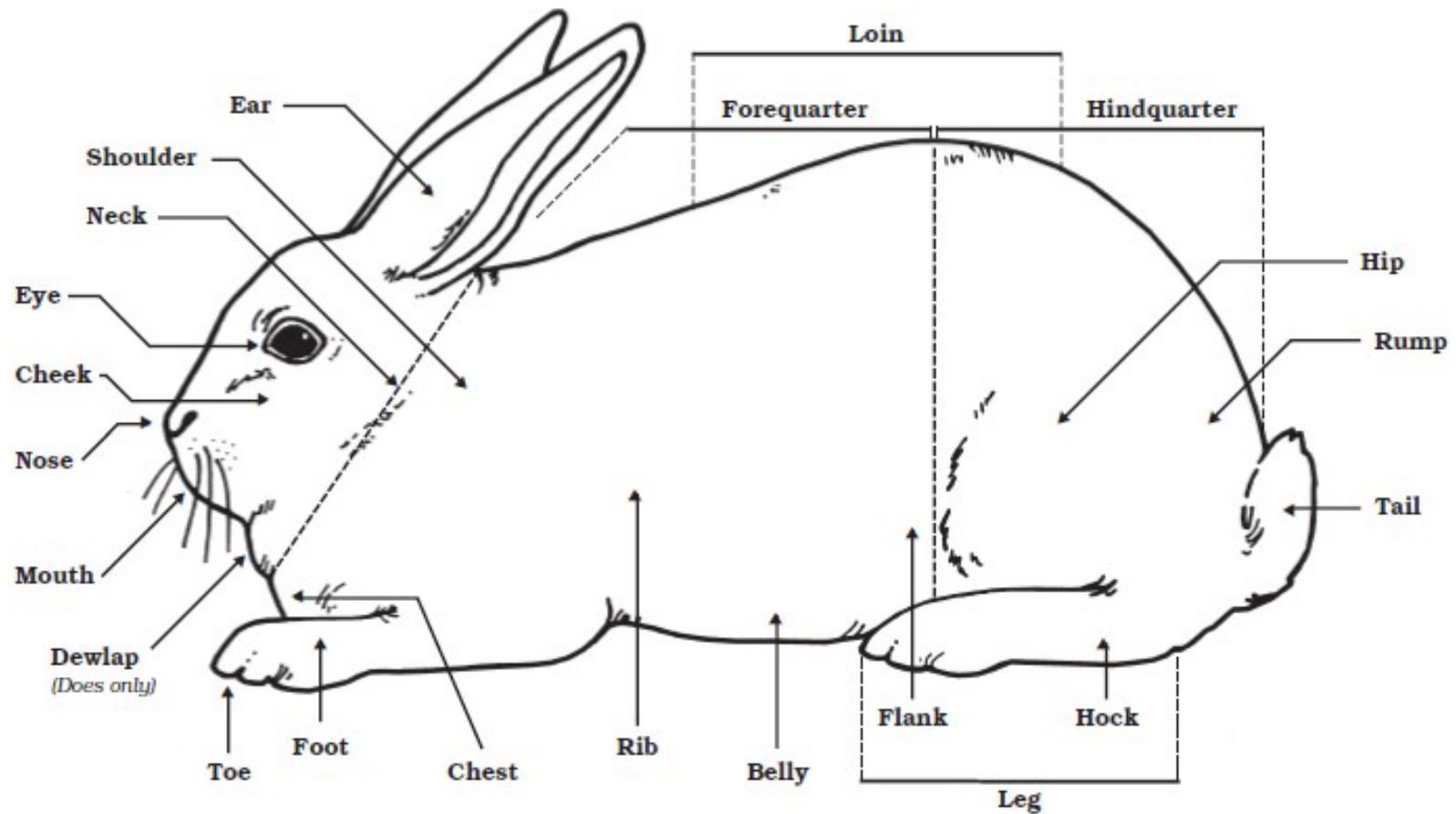
Rabbit Breeds



Rabbit Breeds



Parts of a Rabbit



Parts of a Rabbit Labels

Belly

Loin

Cheek

Mouth

Chest

Neck

Dewlap (Does)

Nose

Ear

Rib

Eye

Rump

Flank

Shoulder

Foot

Tail

Forequarter

Toe

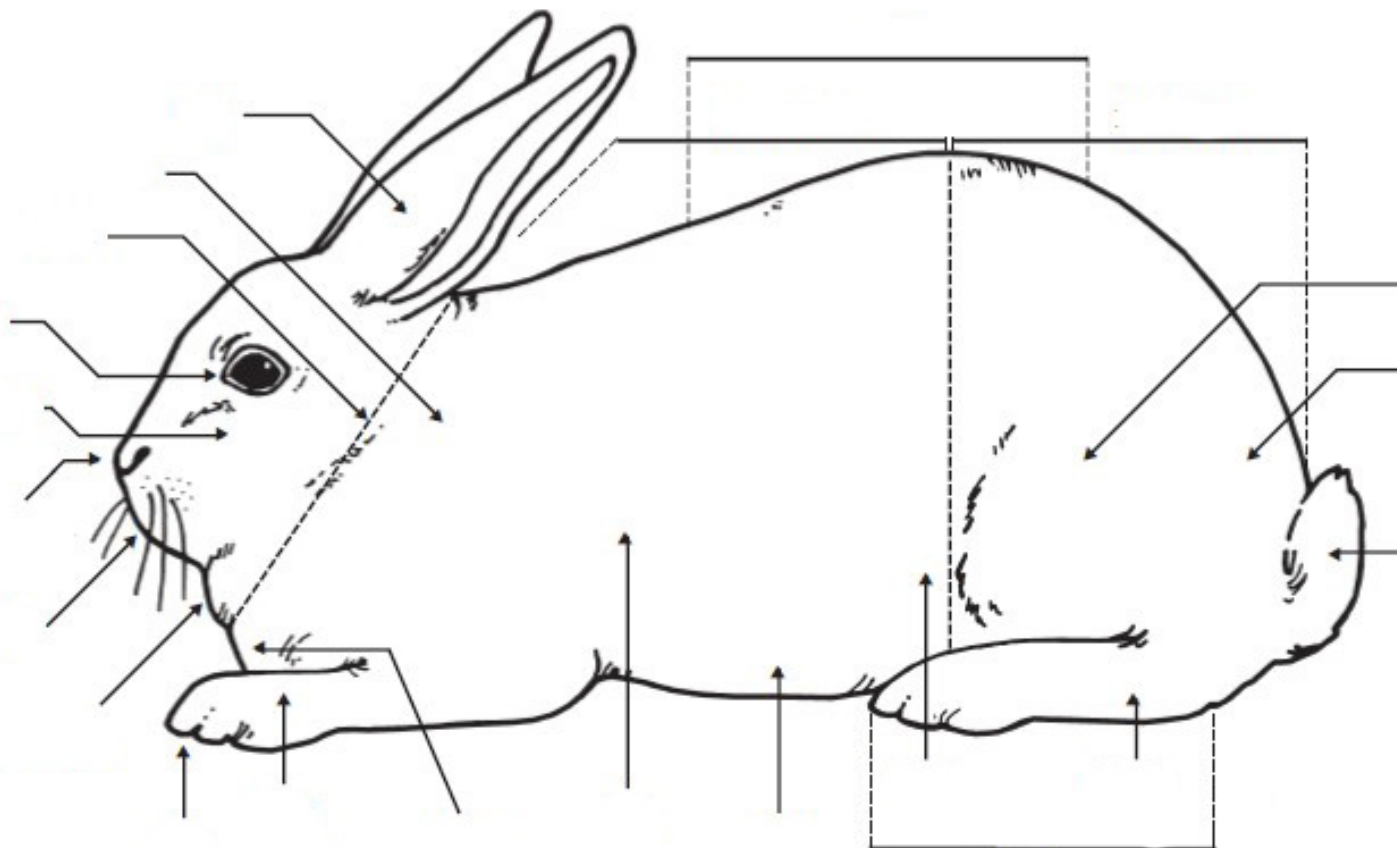
Hindquarter

Hip

Hock

Leg

Parts of a Rabbit



Medication Label

Name of Drug _____

OMNIBIOTIC

(hydrocillin) _____

Active Ingredients

Directions for use: See package insert

Cautions
and Warnings _____

Warning: The use of this drug must be discontinued for 30 days before treated animals are slaughtered for food. Exceeding the highest recommended dosage level may result in antibiotic residues in meat or milk beyond the withdrawal time.

Withholding
Times

Store between 2° and 8° C (36° and 46° F) _____

Storage

Keep dry and keep away from light

Quantity
of Contents _____

Net Contents: 100 ml



Distributed by

USA Animal Health, Inc. _____

Name of Distributor

Medication Label Labels

Active Ingredients

Cautions and Warnings

Name of Distributor

Name of Drug

Quantity of Contents

Storage

Withholding Times

Medication Label

_____ **OMNIBIOTIC**

(hydrocillin) _____

Directions for use: See package insert

_____ { **Warning:** The use of this drug must be discontinued for 30 days before treated animals _____ are slaughtered for food. Exceeding the highest recommended dosage level may result in antibiotic residues in meat or milk beyond the withdrawal time.

Store between 2° and 8° C (36° and 46° F) _____

Keep dry and keep away from light

_____ Net Contents: 100 ml

Distributed by

USA Animal Health, Inc. _____



Types of Rabbit Questions for Skillathon

1. Symptoms of Diseases
2. Weaning
3. Tattooing
4. Weights
5. Care