

# Dairy Cattle Breeds



Guernsey



Ayrshire



Holstein



Milking Shorthorn



Jersey



Brown Swiss

# **Dairy Cattle Breed Labels**

Aryshire

Brown Swiss

Guernsey

Holstein

Jersey

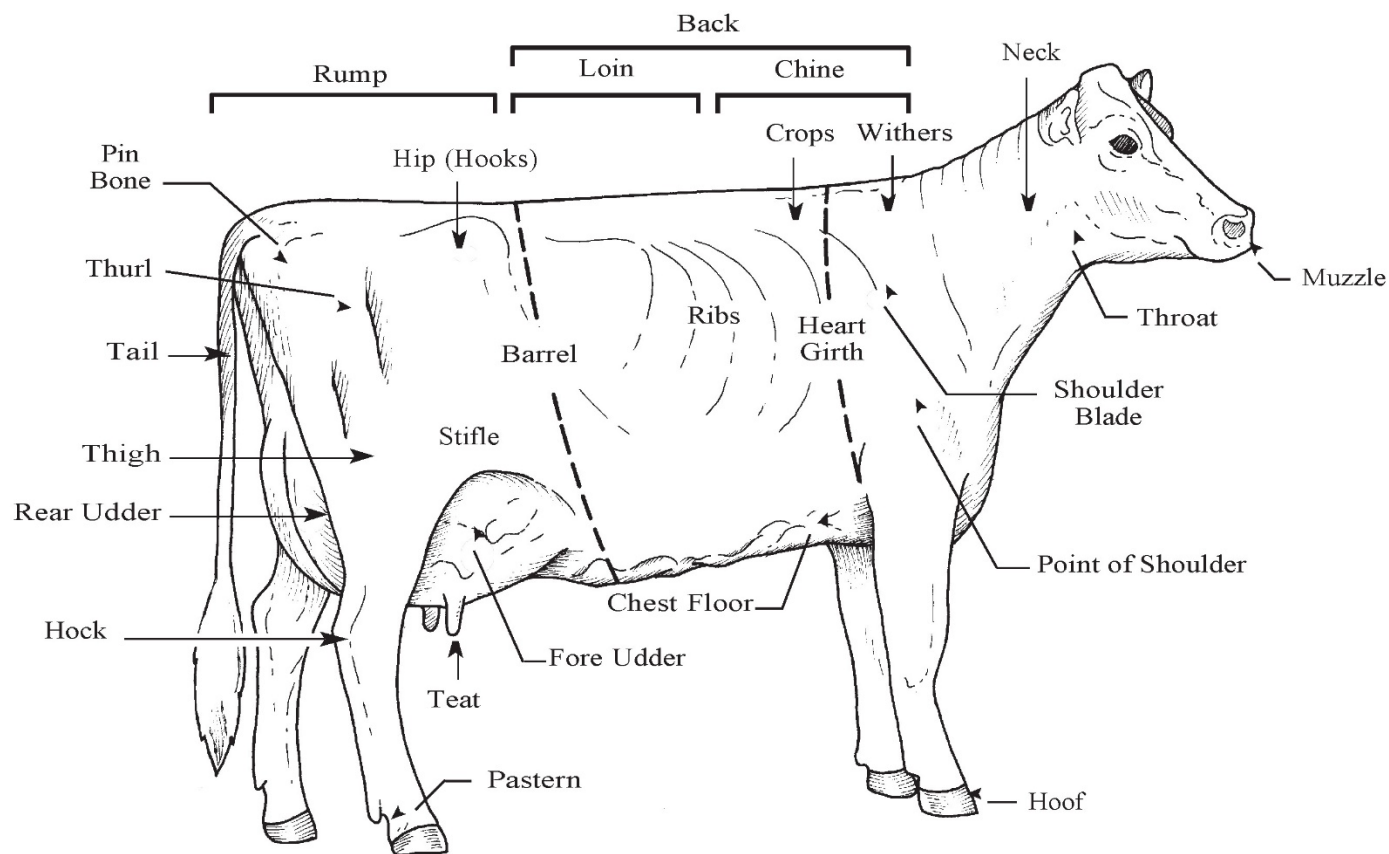
Milking Shorthorn



## Dairy Cattle Breeds



## Parts of a Dairy Cow



## **Parts of a Dairy Cow Labels**

Back

Pin Bone

Barrel

Point of Shoulder

Chest Floor

Rear Udder

Chine

Ribs

Crops

Rump

Fore Udder

Shoulder Blade

Heart Girth

Stifle

Hip (Hooks)

Tail

Hock

Teat

Hoof

Thigh

Loin

Throat

Muzzle

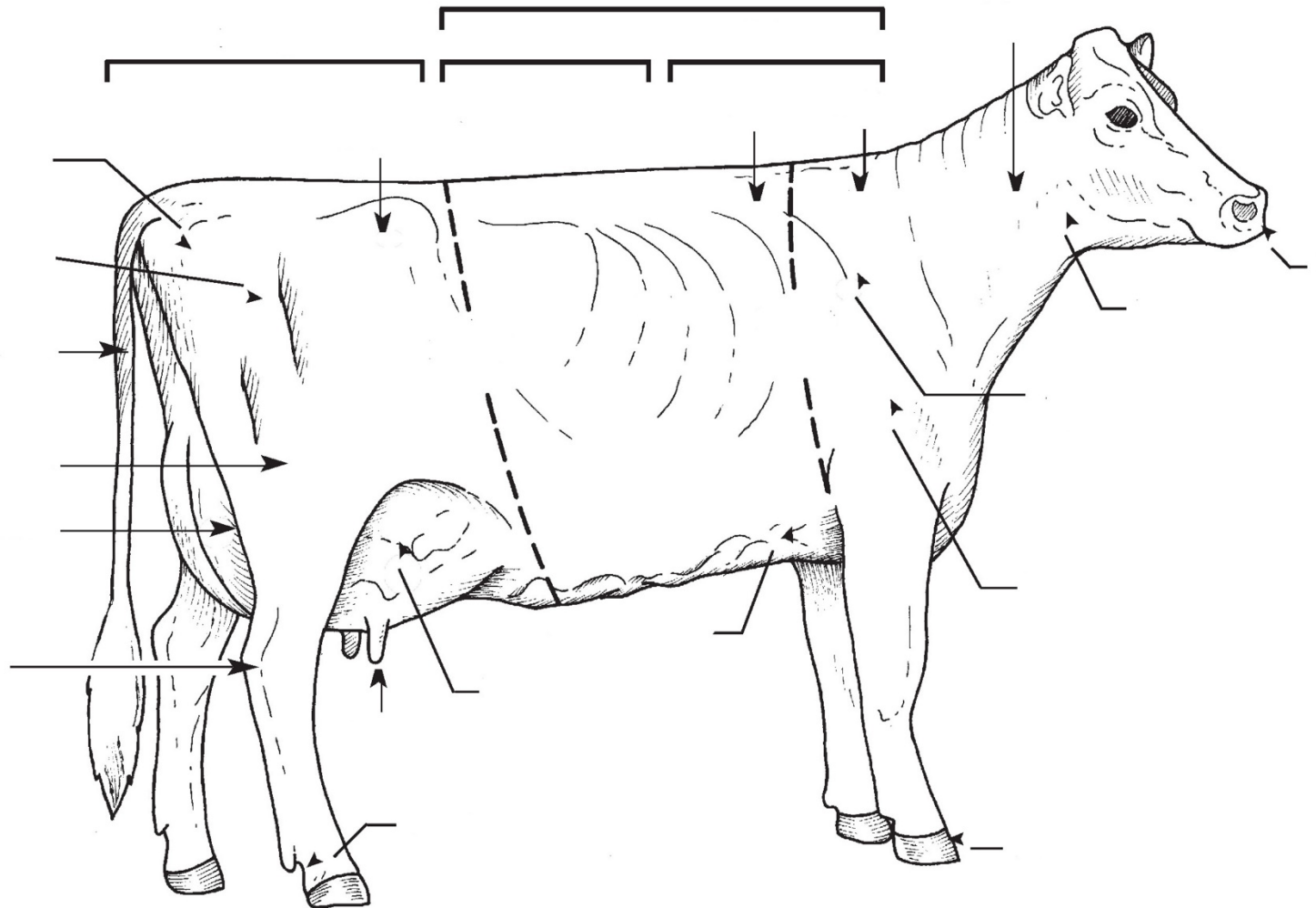
Thurl

Neck

Withers

Pastern

## Parts of a Dairy Cow



# Medication Label

Name of Drug \_\_\_\_\_

**UDDERFUSE**

(hydrocillin sodium) \_\_\_\_\_

Active Ingredients

**for Intramammary Infusion of LACTATING COWS ONLY**

Each 10 ml syringe contains 200 mg of hydrocillin

active as hydrocillin sodium

**Read Package Insert**

Storage \_\_\_\_\_

**Store at room temperature 59° to 86° F****Usual Dosage:** One syringe per affected quarter each 12 hours for a maximum of 2 treatments**Warning:** \_\_\_\_\_Cautions  
and WarningsWithholding  
Times \_\_\_\_\_

- 1) Milk that has been taken from animals during treatment and for 96 hours (8 milkings) after the last treatment must not be used as food.
- 2) Treated animals must not be slaughtered for food until 4 days after the last treatment.
- 3) Administration of more than the prescribed dose may lead to residue of antibiotic in milk longer than 96 hours.



Net Contents: 10 ml \_\_\_\_\_

Quantity  
of Contents

Distributed by

**USA Animal Health, Inc.** \_\_\_\_\_

Name of Distributor

# **Medication Label Labels**

Active Ingredients

Cautions and Warnings

Name of Distributor

Name of Drug

Quantity of Contents

Storage

Withholding Times



# Medication Label

## **UDDERFUSE**

(hydrocillin sodium)

**for Intramammary Infusion of LACTATING COWS ONLY**

Each 10 ml syringe contains 200 mg of hydrocillin  
active as hydrocillin sodium

**Read Package Insert**

**Store at room temperature 59° to 86° F**

**Usual Dosage:** One syringe per affected quarter each 12 hours for a  
maximum of 2 treatments

### **Warning:**

- 1) Milk that has been taken from animals during treatment  
and for 96 hours (8 milkings) after the last treatment must  
not be used as food.
- 2) Treated animals must not be slaughtered for food until 4  
days after the last treatment.
- 3) Administration of more than the prescribed dose may lead  
to residue of antibiotic in milk longer than 96 hours.



Net Contents: 10 ml

Distributed by

**USA Animal Health, Inc.**

# **Types of Dairy Cattle Questions for Skillathon**

## **Beginner**

1. Pasteurization
2. Housing
3. Diseases
4. Breeds
5. Feed and Nutrients
6. Milking Procedures
7. Breeding

## **Intermediate**

1. Pasteurization
2. Housing
3. Diseases
4. Breeds
5. Feed and Nutrients
6. Milking Procedures
7. Milk Production
8. Breeding

## **Advanced**

1. Pasteurization
2. Housing
3. Diseases
4. Breeds
5. Feed and Nutrients
6. Milking Procedures
7. Stomach Structure
8. Dairy Herd Improvement Association
9. Immunity
10. Careers