

Office of

# Postdoctoral Affairs

We enhance the postdoctoral  
experience for scholars across the  
university.

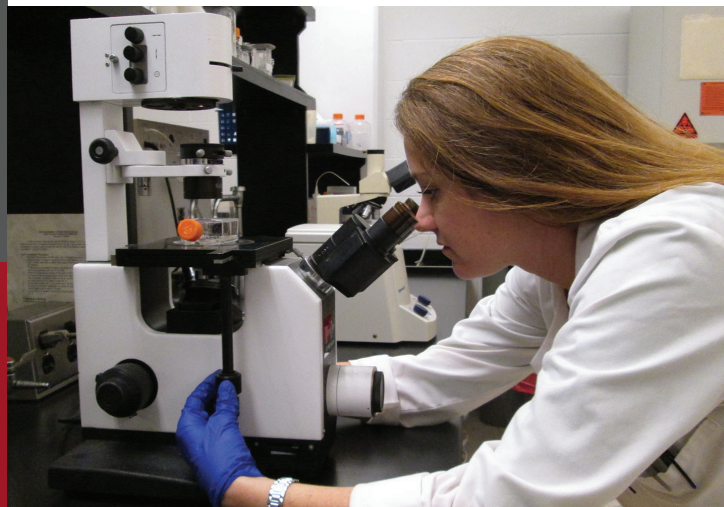
**2017**  
year established

**15**  
colleges being served

**600+**  
postdocs at Ohio State



THE OHIO STATE  
UNIVERSITY



## Services

The Office of Postdoctoral Affairs (OPA) will:

- Fund your membership to the National Postdoc Association (NPA) and sponsor opportunities for you to attend the NPA annual meeting
- Provide you with research and professional development resources and opportunities
- Collect and disseminate data on Ohio State postdocs

## Key Initiatives

### Advocacy

We address all advocacy and policy issues that affect Ohio State's postdoctoral community – general policies, benefits, conflict resolution and more.

### Professional Development

We offer assistance with fellowship/grant writing, postdoctoral mentoring plans and guidance on academic and non-research career paths.

### Enhancing Mentorship

We provide resources, training and assistance with mentoring plans for research proposals. We support the recruitment of international and underrepresented minority postdocs.

### Development

We will bring more fellowships and research funding to Ohio State's postdoctoral scholars.

## For More Information Contact:

Office of Postdoctoral Affairs

### OUR TEAM

**Zakee Sabree**, Director, [sabree.8@osu.edu](mailto:sabree.8@osu.edu)  
**Marcela Hernandez**, Administrative Director,  
[hernandez.16@osu.edu](mailto:hernandez.16@osu.edu)

**Sandra Asieduah**, Program Assistant,  
[asieduah.1@osu.edu](mailto:asieduah.1@osu.edu)

### COLLEGE LIAISONS

**Brian Orefice**, Arts and Sciences, [orefice.1@osu.edu](mailto:orefice.1@osu.edu)

**Amber Robinson**, Medicine, [Amber.Robinson@osumc.edu](mailto:Amber.Robinson@osumc.edu)

**La'Tonia Stiner-Jones**, Engineering, [stiner-jones.1@osu.edu](mailto:stiner-jones.1@osu.edu)

**Kayla Arnold**, Food, Agricultural, and Environmental Sciences,  
[arnold.1065@osu.edu](mailto:arnold.1065@osu.edu)

**Kim Lightle**, Education and Human Ecology, [lightle.16@osu.edu](mailto:lightle.16@osu.edu)

[go.osu.edu/osupostdocs](http://go.osu.edu/osupostdocs)