

OHIO STATE UNIVERSITY EXTENSION



A Closer Look

Danae Wolfe



THE OHIO STATE UNIVERSITY
COLLEGE OF FOOD, AGRICULTURAL,
AND ENVIRONMENTAL SCIENCES

What We'll Cover...

- Basics of photography & your camera
 - Technical
- Macro & close-up techniques
 - Creative

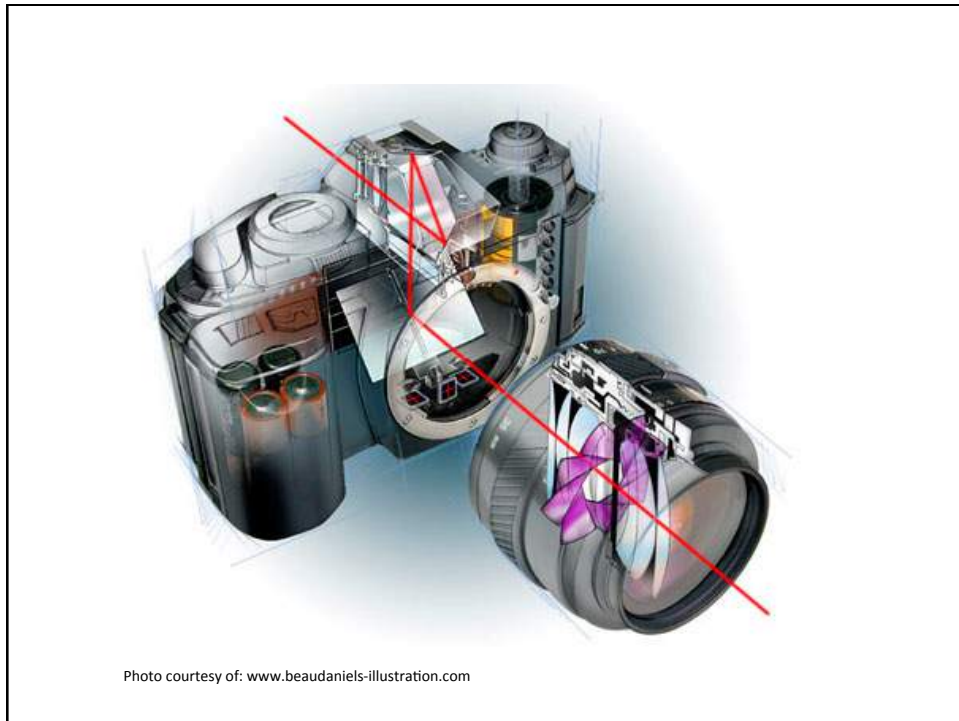


What is Photography?

Photography: the art, science, & practice of creating durable images by recording light or other electromagnetic radiation, either chemically, or by means of a light-sensitive material such as photographic film, or electronically by means of an image sensor

What is Photography?

Photography: recording light!



Technical

Technical Components of Photography

- ISO*
- Aperture*
- Shutter speed*
- Modes of shooting
- White balance



ISO

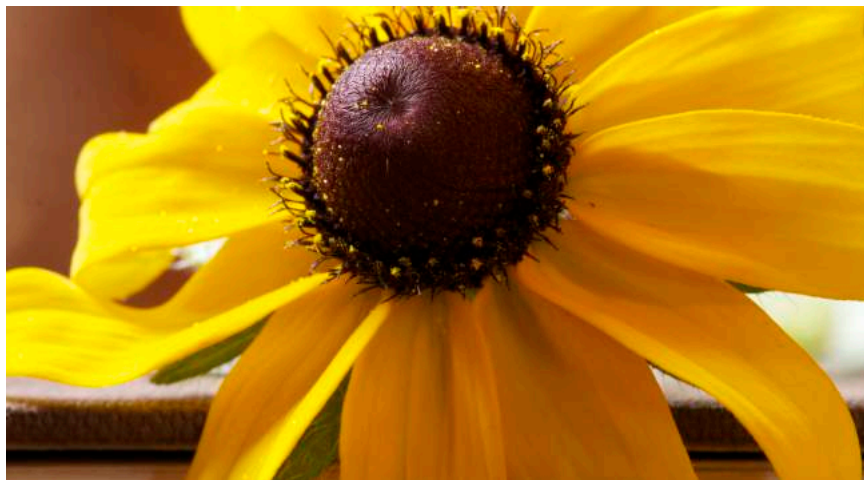
- Indicator of sensor sensitivity
- Higher ISO = increased light sensitivity
 - Great for low light situations
- Lower ISO = decreased light sensitivity
 - Great for high light situations



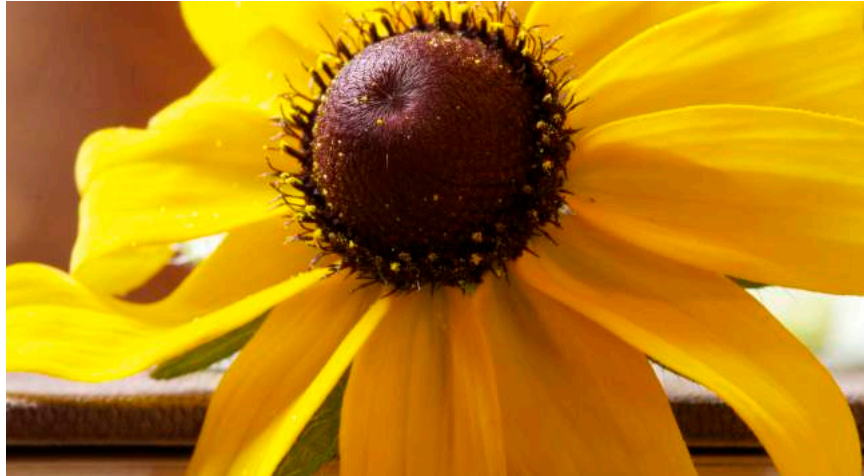
ISO & Noise

- When the sensor is more sensitive to light (higher ISO), it picks up extraneous light produced by the circuitry of the camera. The result is “noise.”
- Higher ISO = more noise
- Lower ISO = less noise

ISO & Noise – ISO 200



ISO & Noise – ISO 1600



ISO & Sensor Size

- Smaller sensors (APS-C) produce more noise at higher ISO speeds
 - More pixels are packed into a smaller area

Aperture

- Aperture – size of the opening in the lens that determines amount of light falling onto sensor

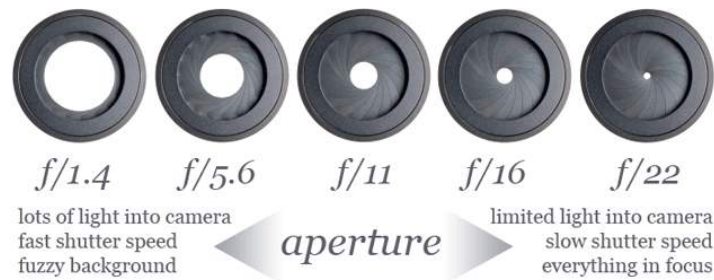


More on Aperture

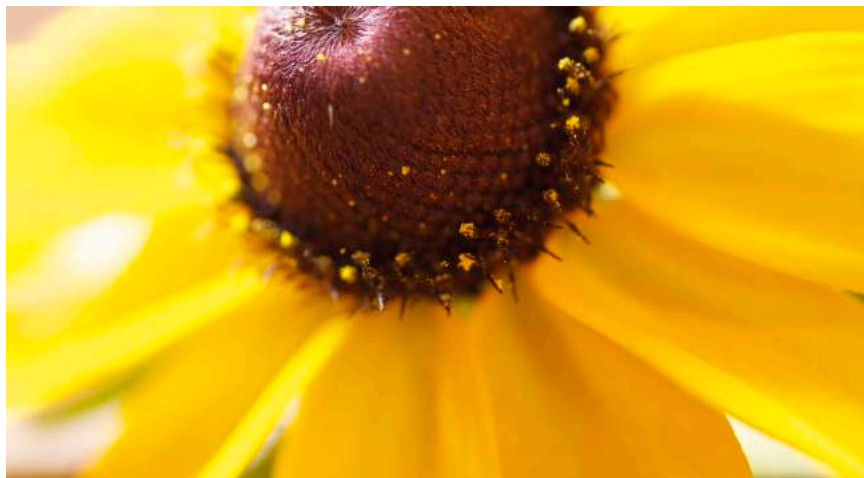
- The higher the f -number, the smaller the aperture
- The lower the f -number, the bigger the aperture



Aperture & Depth of Field



Aperture & Depth of Field - $f3.5$



Aperture & Depth of Field - $f16$



Shutter Speed

- Shutter speed – the length of time the shutter is open when taking a photo
- Slow shutters good for:
 - Low light situations (nighttime)
 - Capture movement (running water)
- Fast shutters good for:
 - Movement (sports, macro)

Modes of Shooting

- Automatic
- Programmable
- Scenes
- Aperture priority
- Shutter priority
- Manual
- Movie (if applicable)

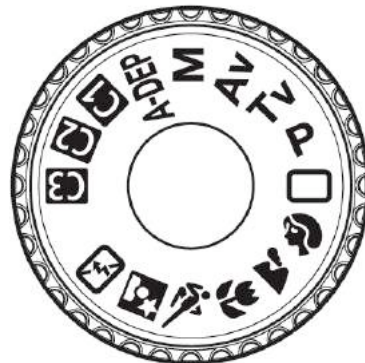


Photo courtesy of: yourcontentnotes.com

Automatic

- Camera chooses ISO, aperture, & shutter based on light entering camera
- Camera also chooses white balance & flash

Programmable/Creative

- Camera chooses shutter & aperture, but you can choose other settings (like ISO)

Scenes

- Macro – optimizes settings for close-ups
- Sports/motion – fast shutter
- Landscape – small aperture (high f -number)
- Portrait – large aperture (low f -number)
- Night – slow shutter

Aperture Priority

- You choose aperture, camera chooses shutter



Shutter Priority

- You choose shutter, camera chooses aperture



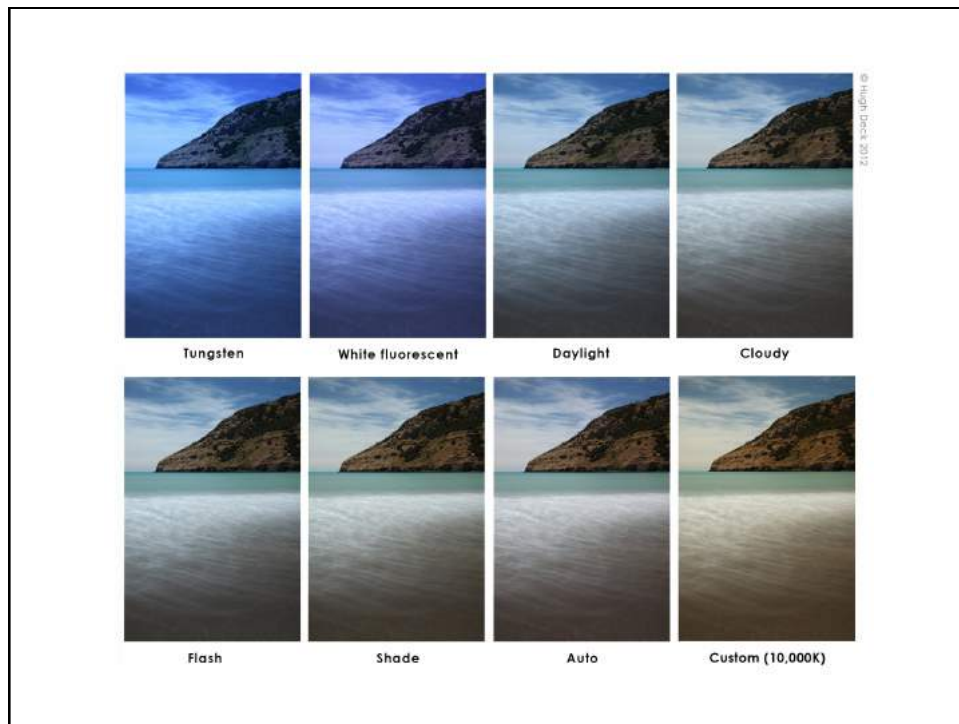
Manual

- You choose all settings (ISO, aperture, shutter, white balance)
- Camera still provides suggested settings based on meter reading



White Balance

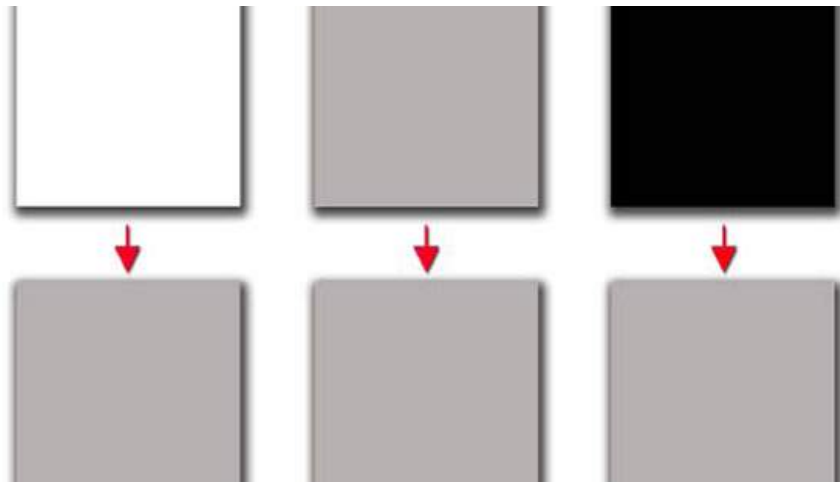
- Removes color casts created by shooting under particular light situations
 - Auto white balance
 - Kelvin
 - Custom
 - Tungsten
 - Fluorescent
 - Daylight
 - Flash
 - Cloudy
 - Shade



Built-in Light Meter

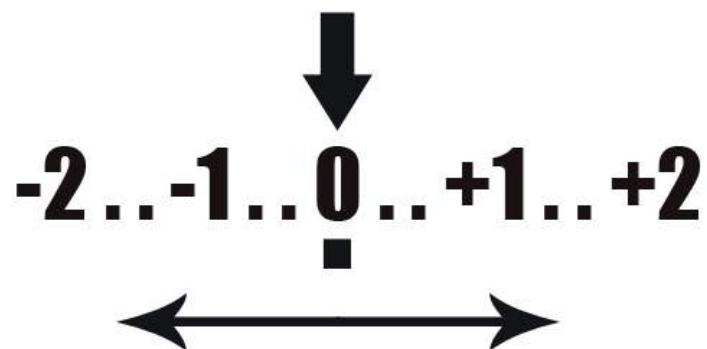
- Camera exposes for middle gray
 - Midway point between white & black
 - Also referred to as “18% gray”
- Not always accurate for bright white or dark scenes
 - Snow
 - Nighttime photography

Built-in Light Meter



Built-in Light Meter

Exposure



Macro & Close-up Techniques

Video Time!

- <http://www.youtube.com/watch?v=wqRn3at0H60>

Macro Lenses

- Macro lenses
 - 50mm
 - 100mm
 - 180mm
 - 200mm
- Lenses with macro feature
- Dedicated macro lenses
 - Canon MP-E 65m: 1-5x magnification



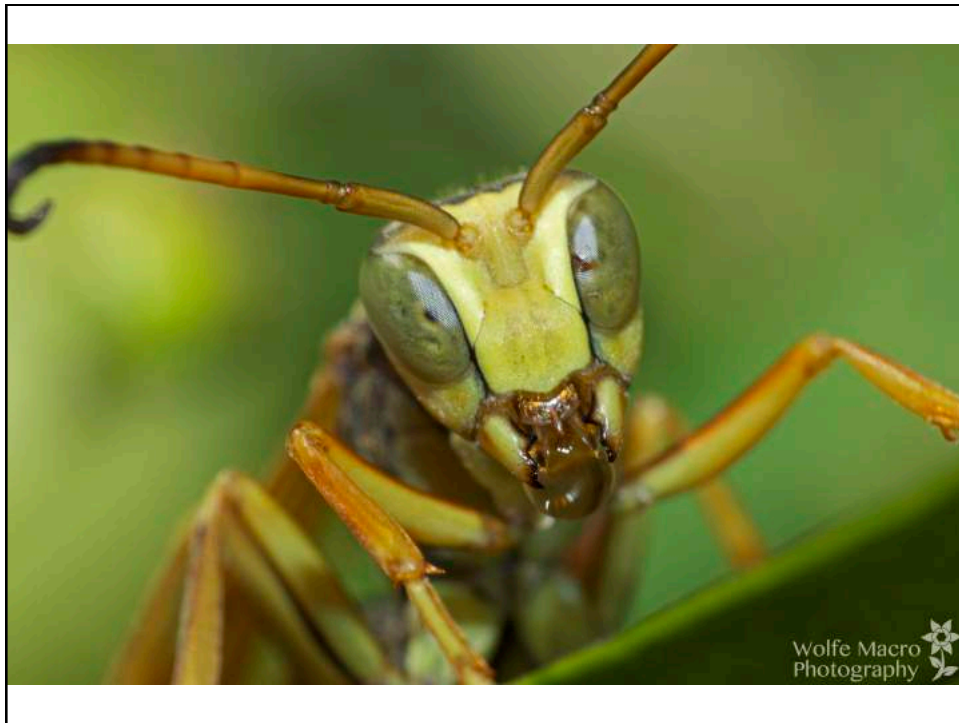


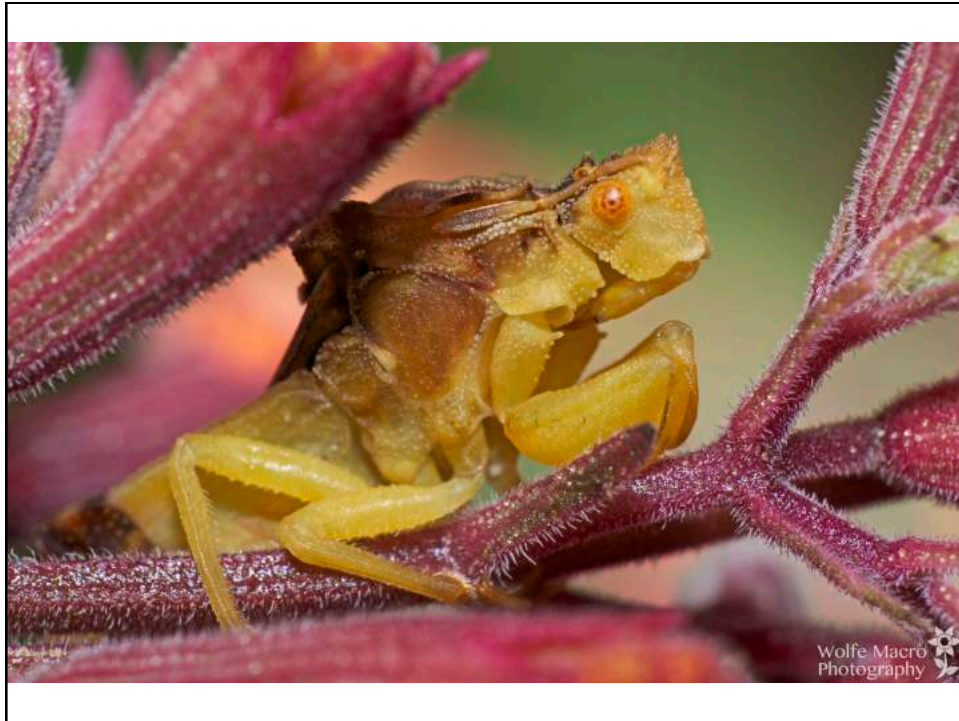


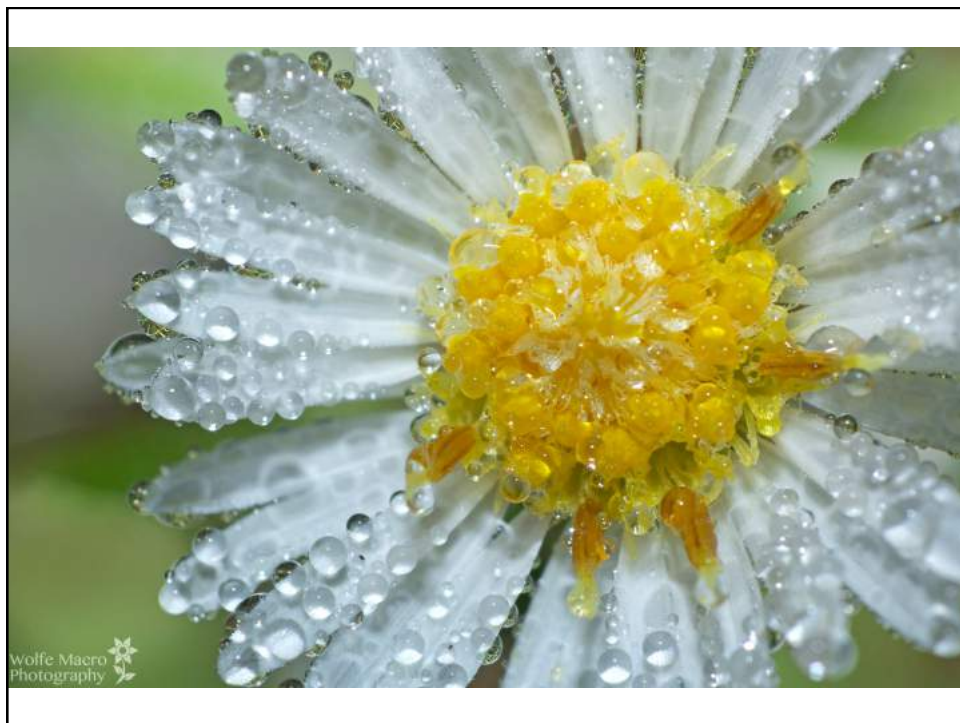
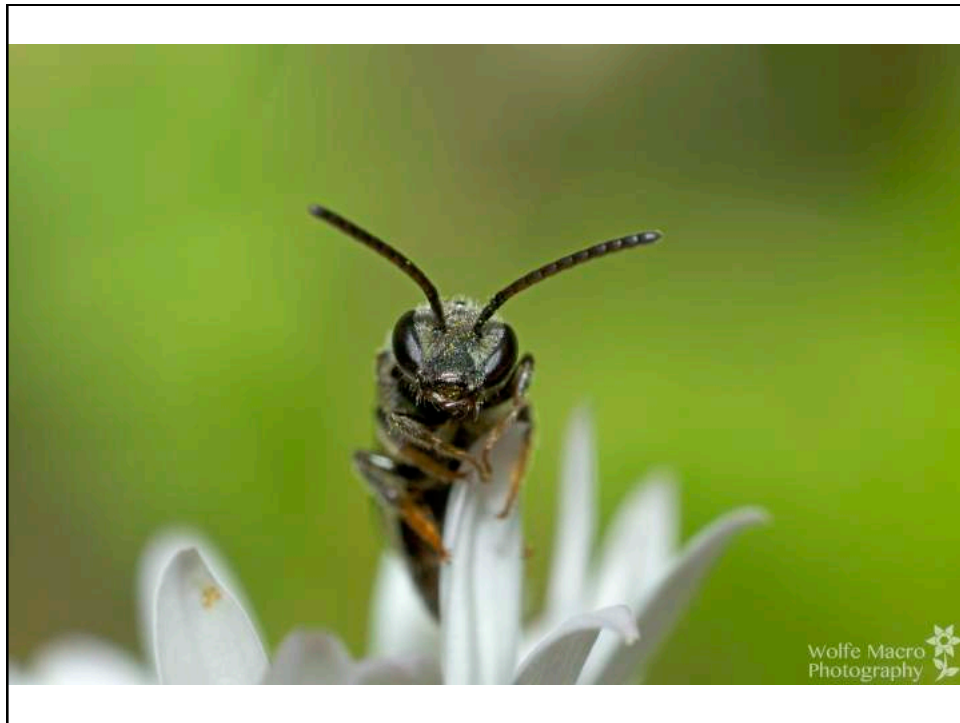
Reverse Lens

- Reverse prime lens (28mm or 50mm)
- Use special adapter
- Reversed lens acts as magnifier





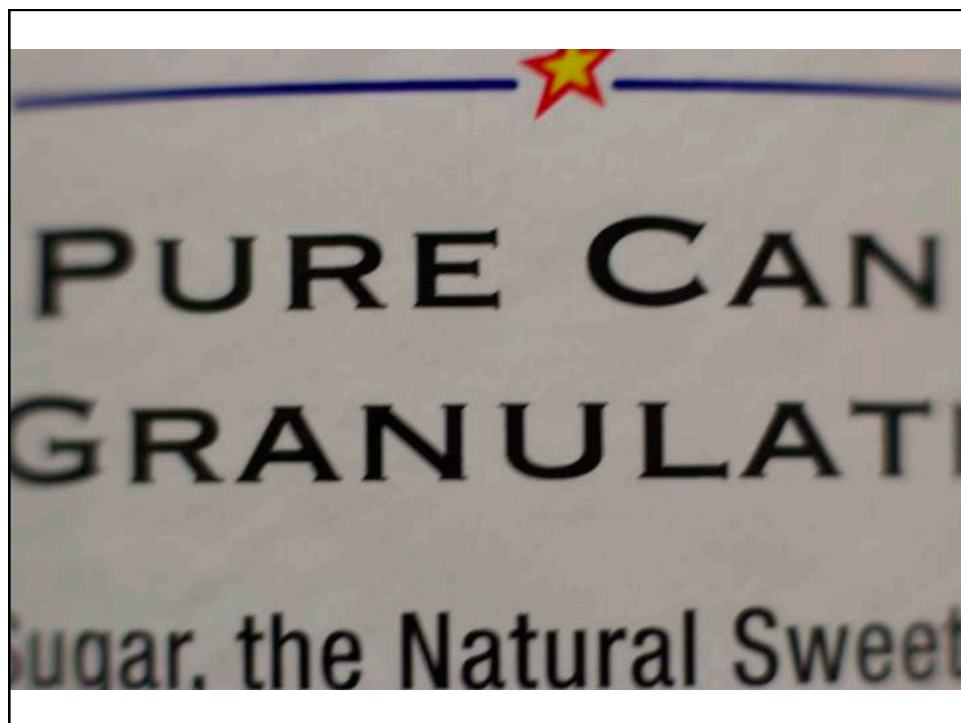
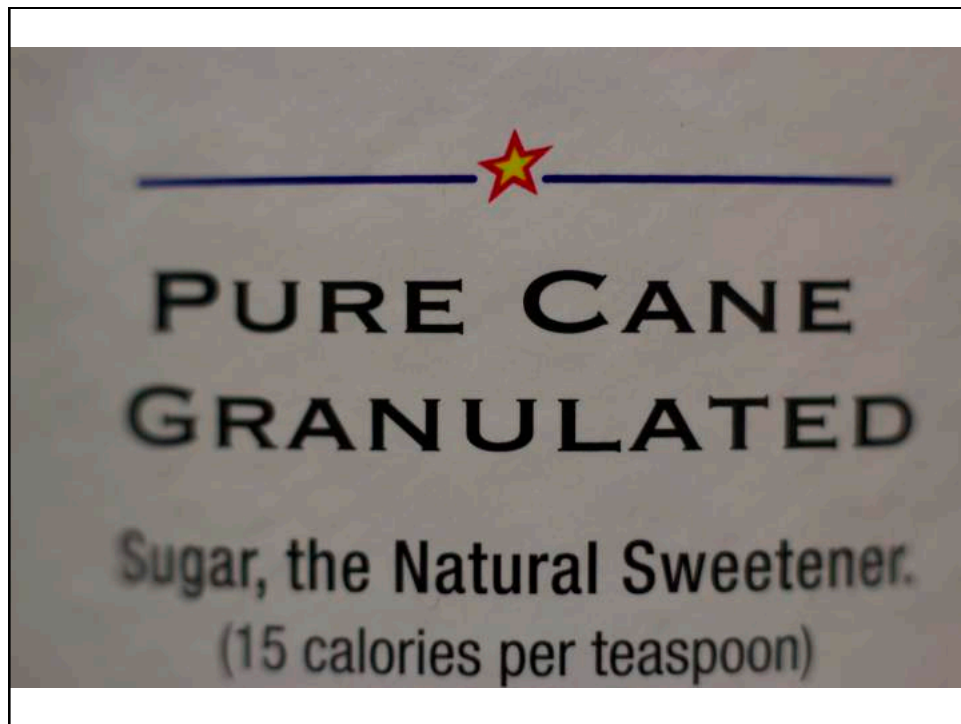




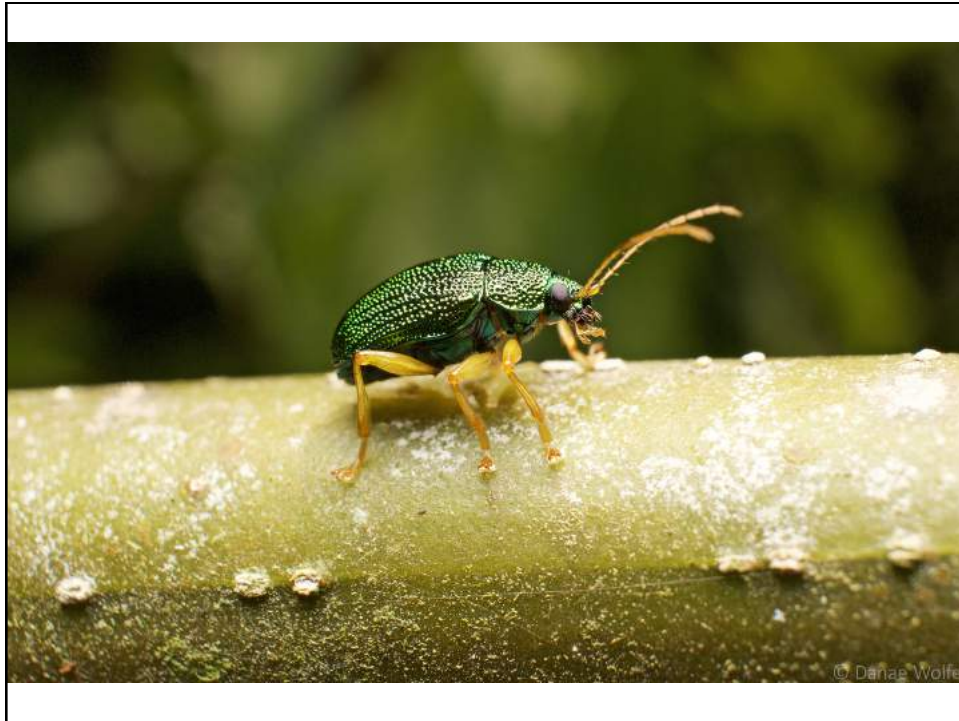
Extension Tubes

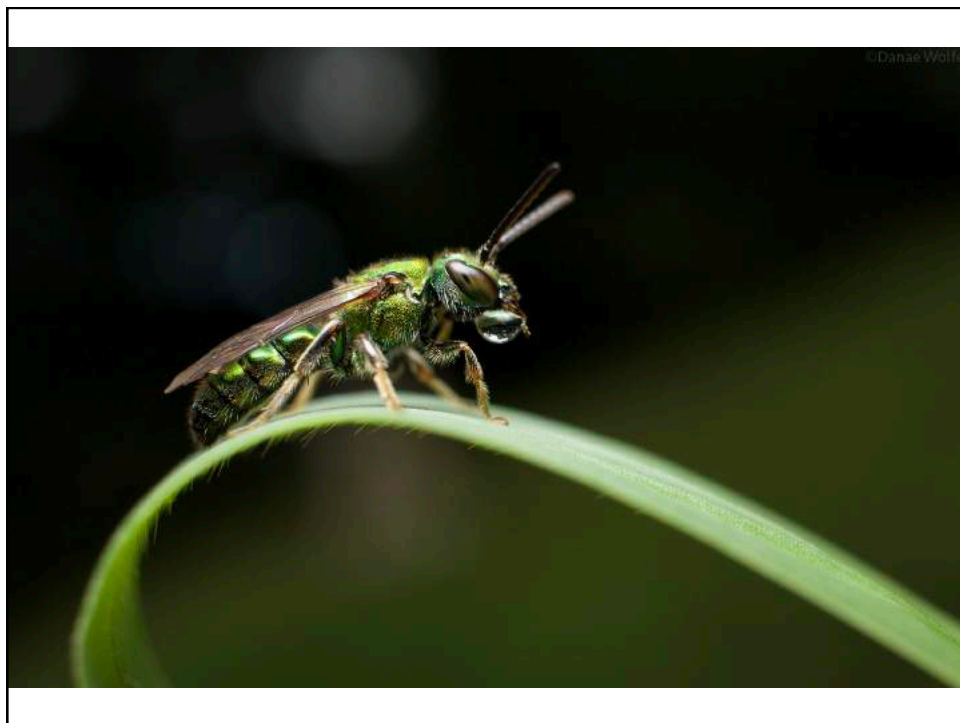
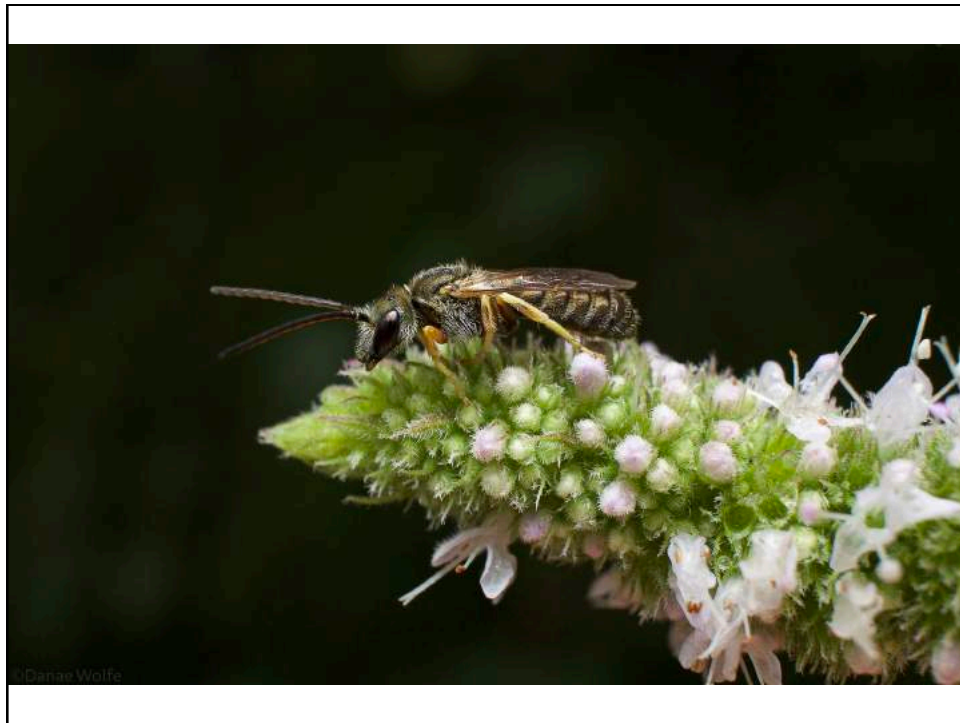
- Decreases minimum focal distance
- Increases magnification of subject on sensor
- Contain no optical elements (glass)
- Come in variety of sizes (can combine)
- Cheap ones do not maintain electrical connectivity (difficult to master)













Filters

- Filters that screw onto end of lens
- Add magnification
- Add extra glass element
 - Reduces light

Macro Flash

- Ring flashes
- Twin light flashes



Macro for your Camera Phone

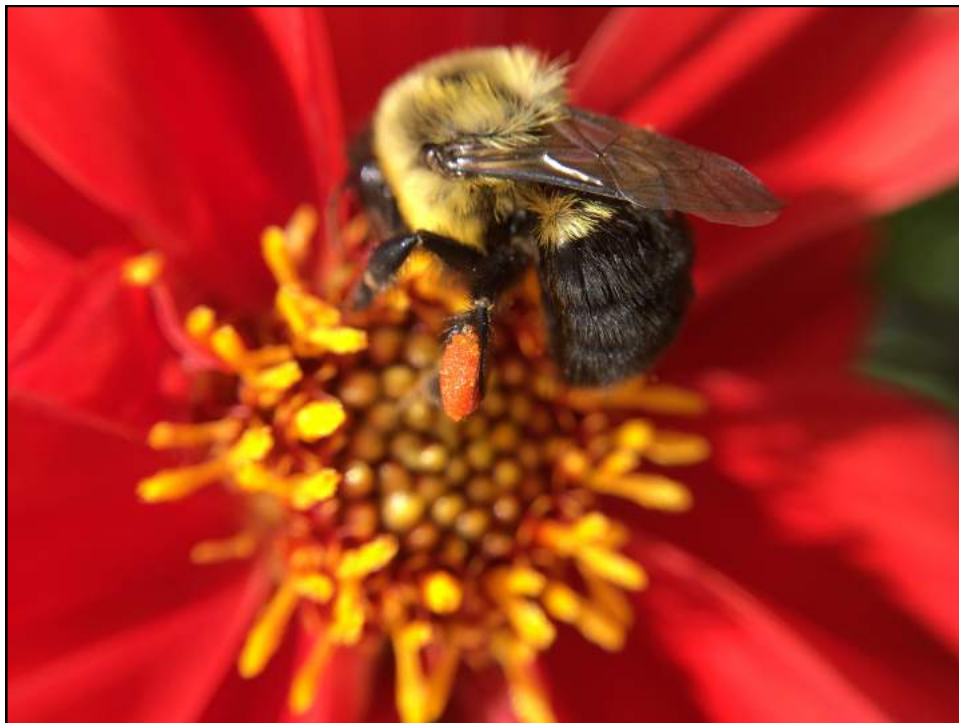
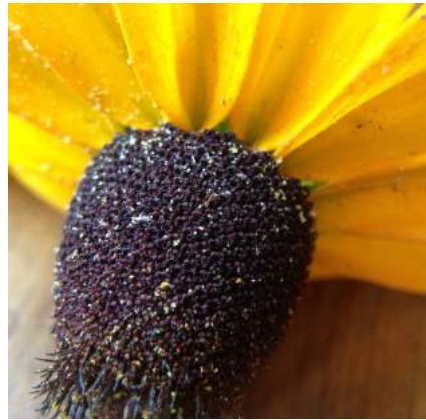
- Macro lens adaptors
- Use old camera lens

Macro with iPhone

Without lens



With lens



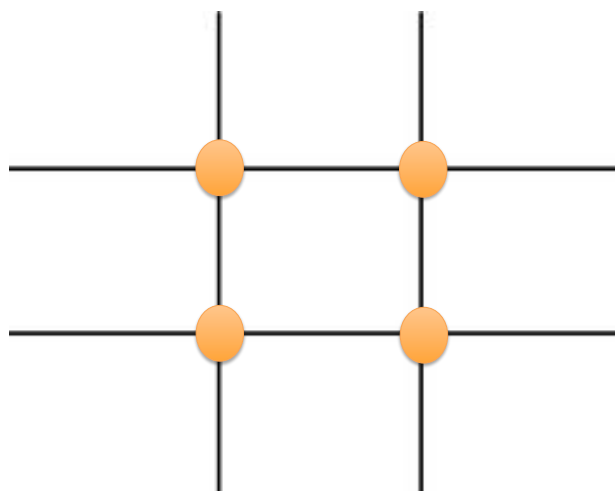


Creative

Get Creative!

- Composition
- Lighting
- Depth of field
- Background & bokeh
- Color
- Subject

Rule of Thirds



Composition



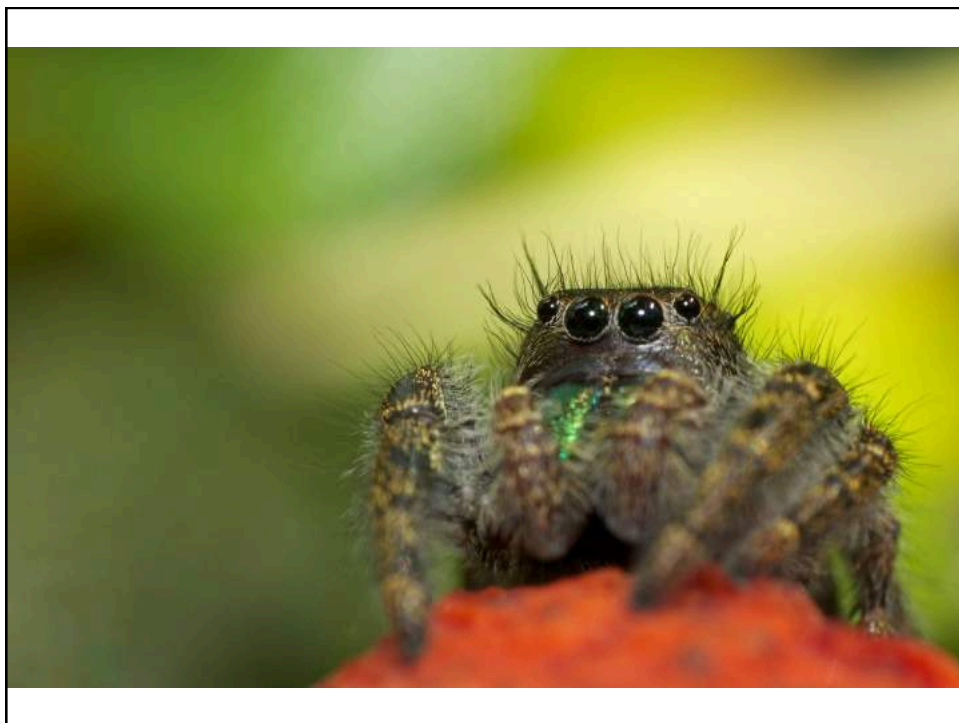


Lighting





Depth of Field (DOF)



Background





Bokeh



Color



