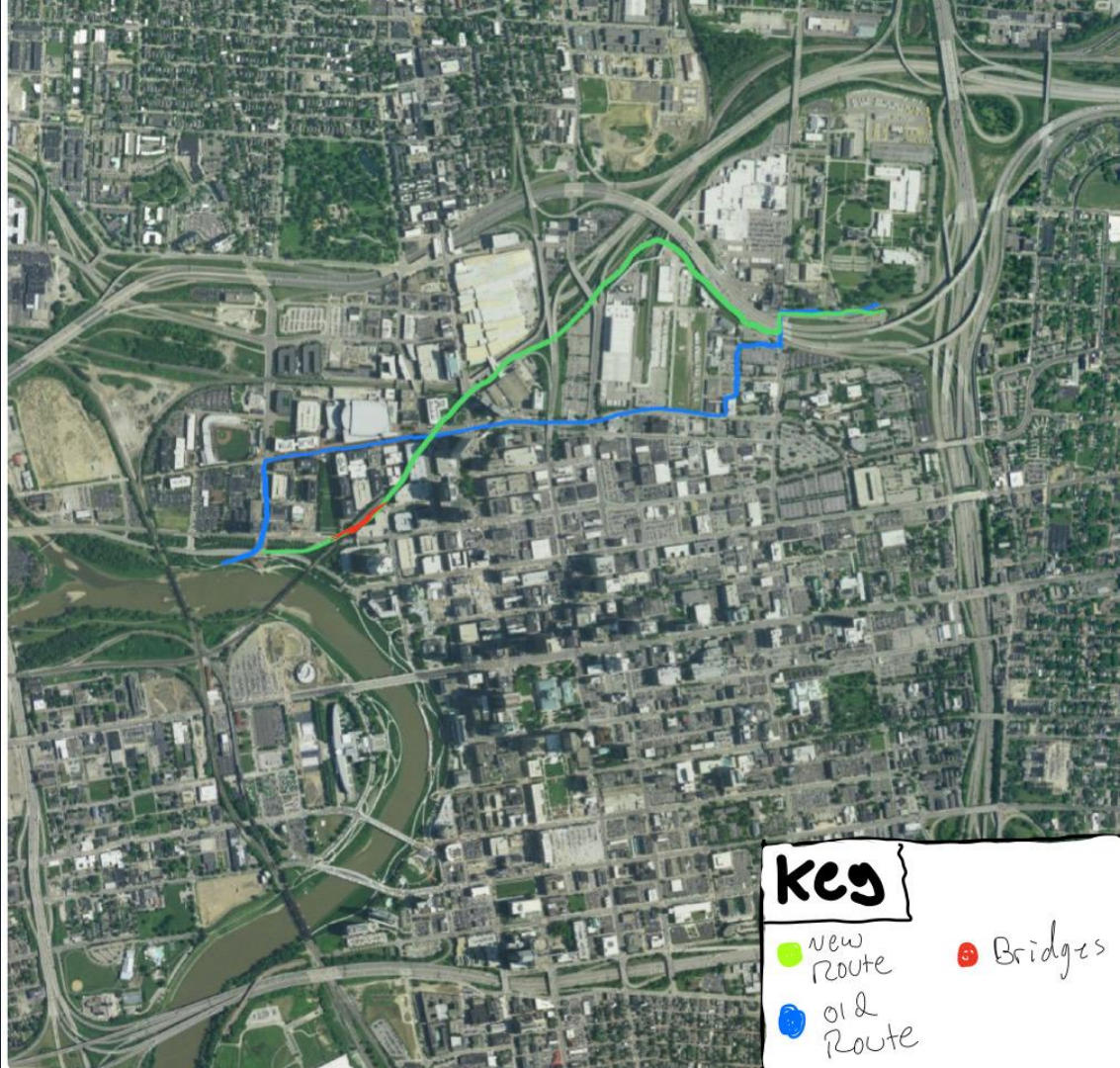




FOTO Presentation

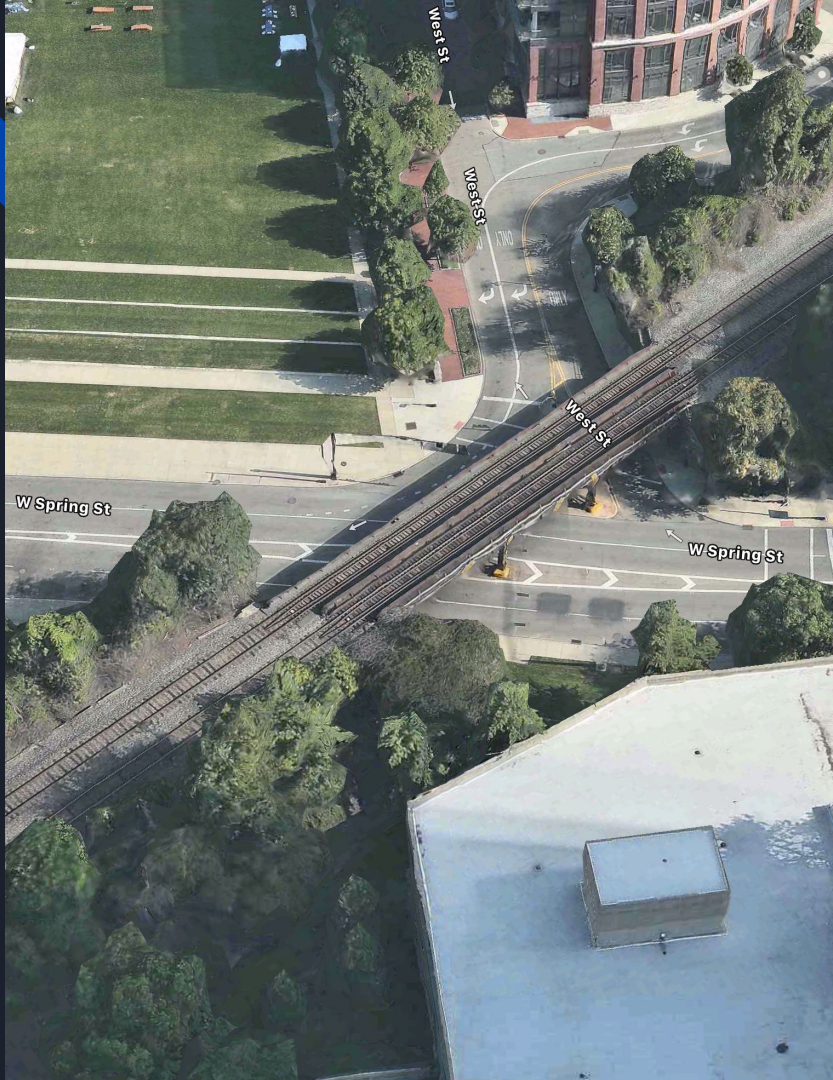




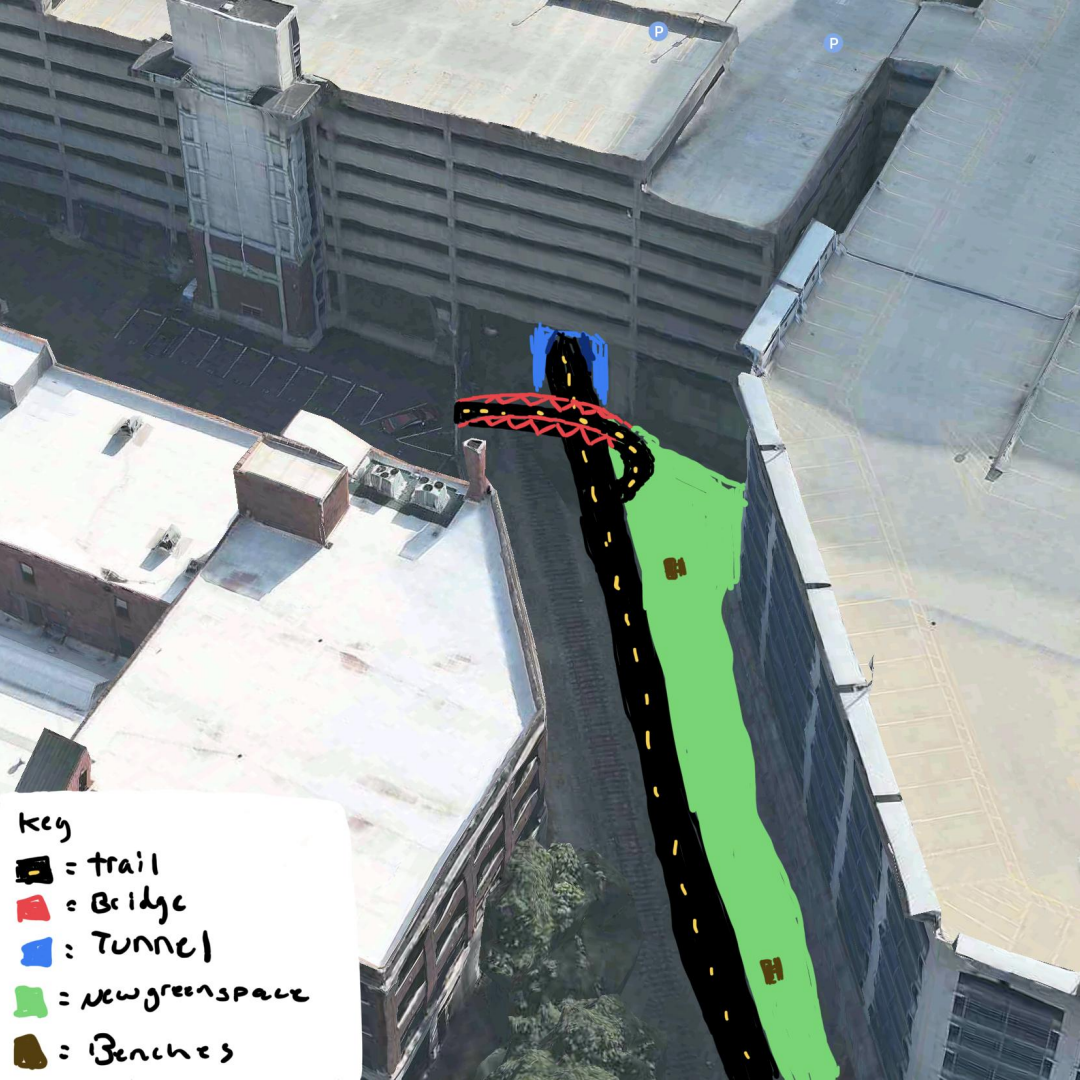
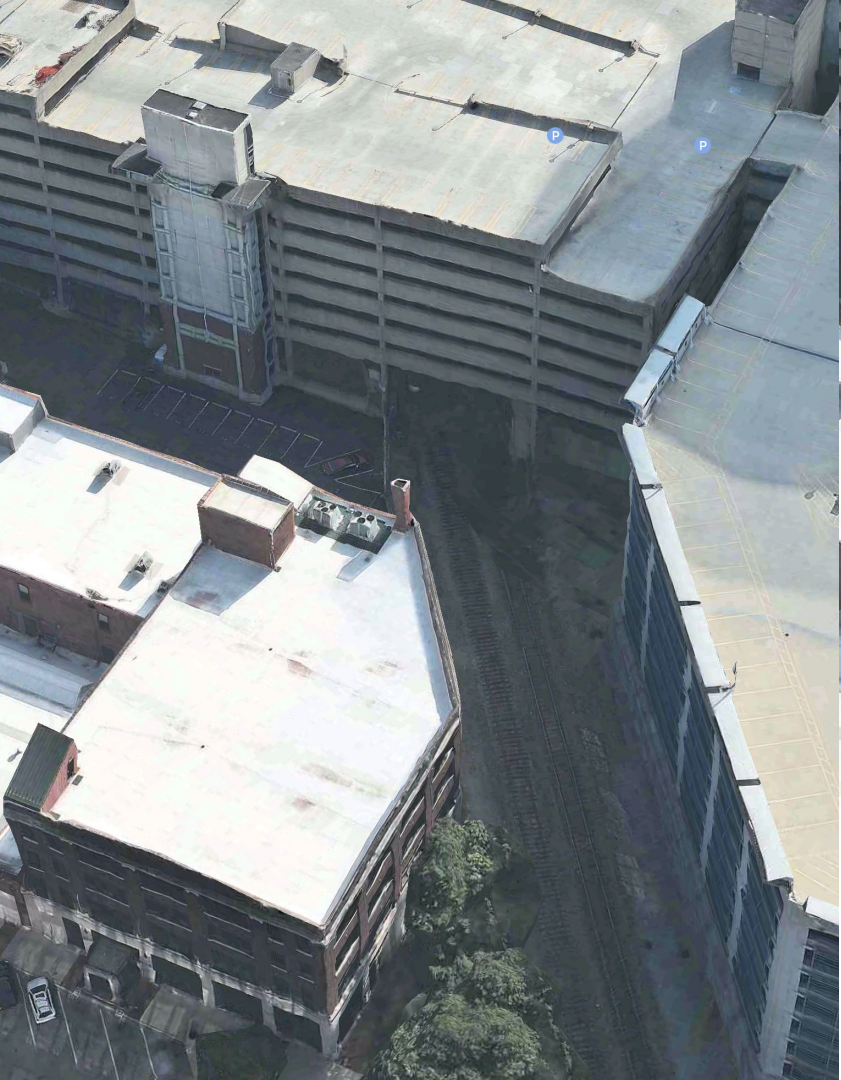
Key

-  new Route
-  old Route
-  Bridges





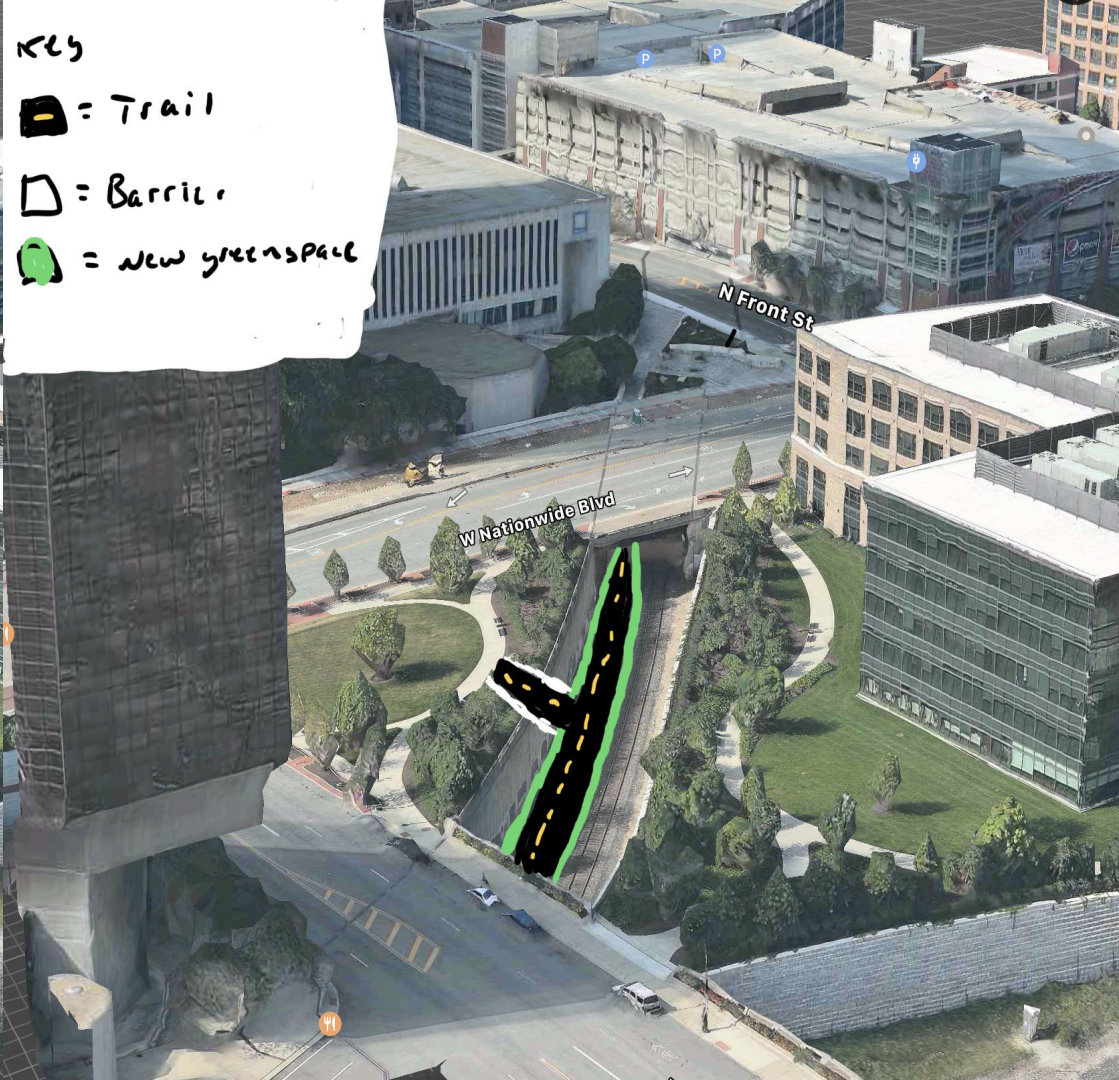
- Key
- Trail
 - New green space
 - Railings
 - Benches





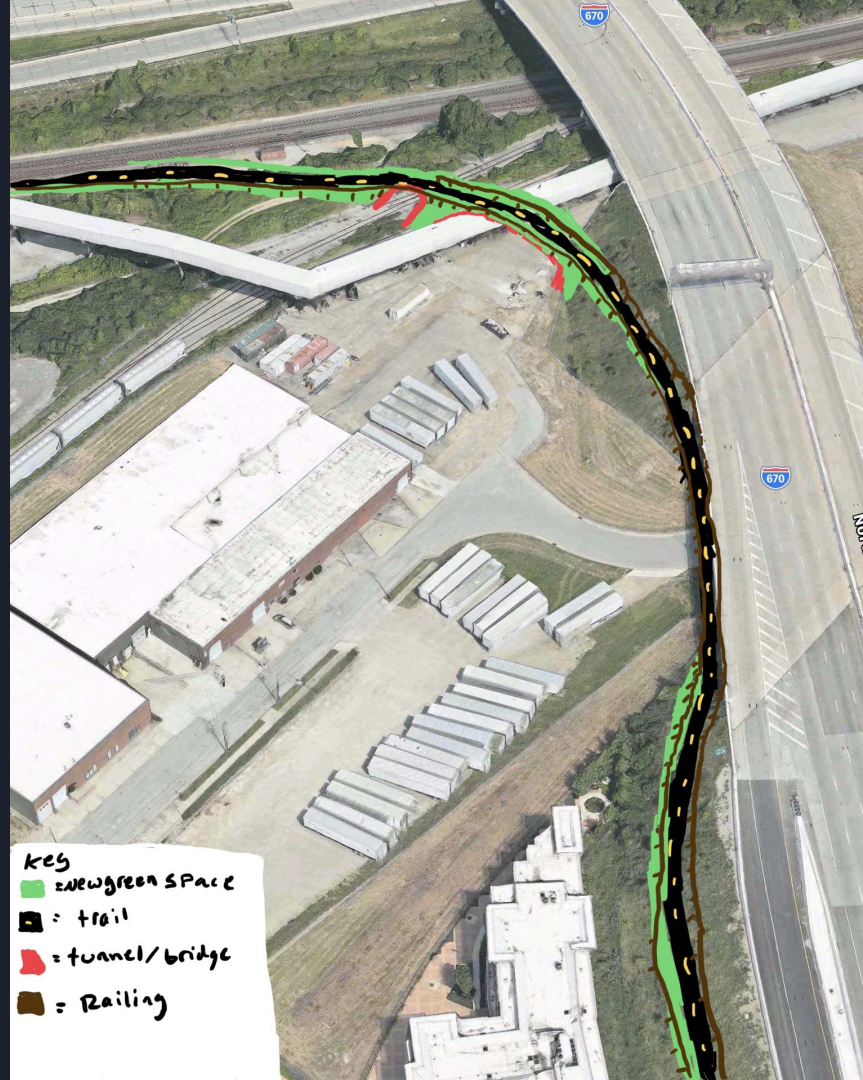
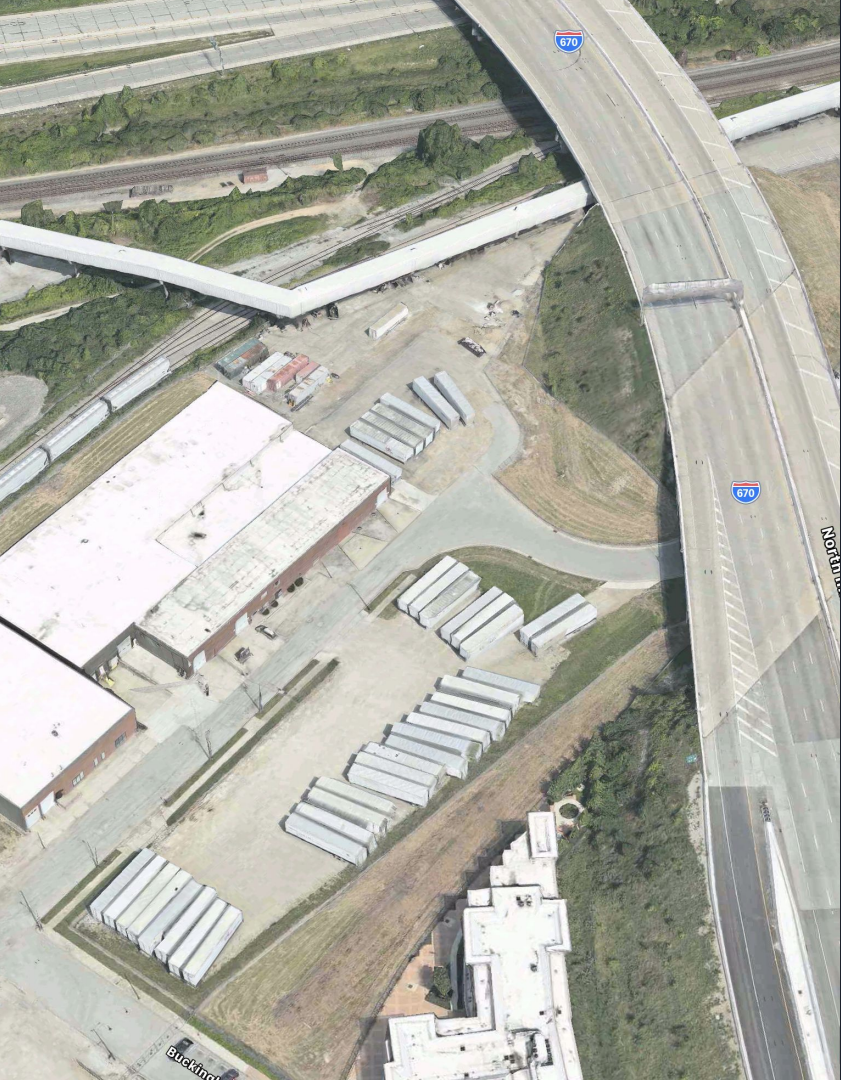


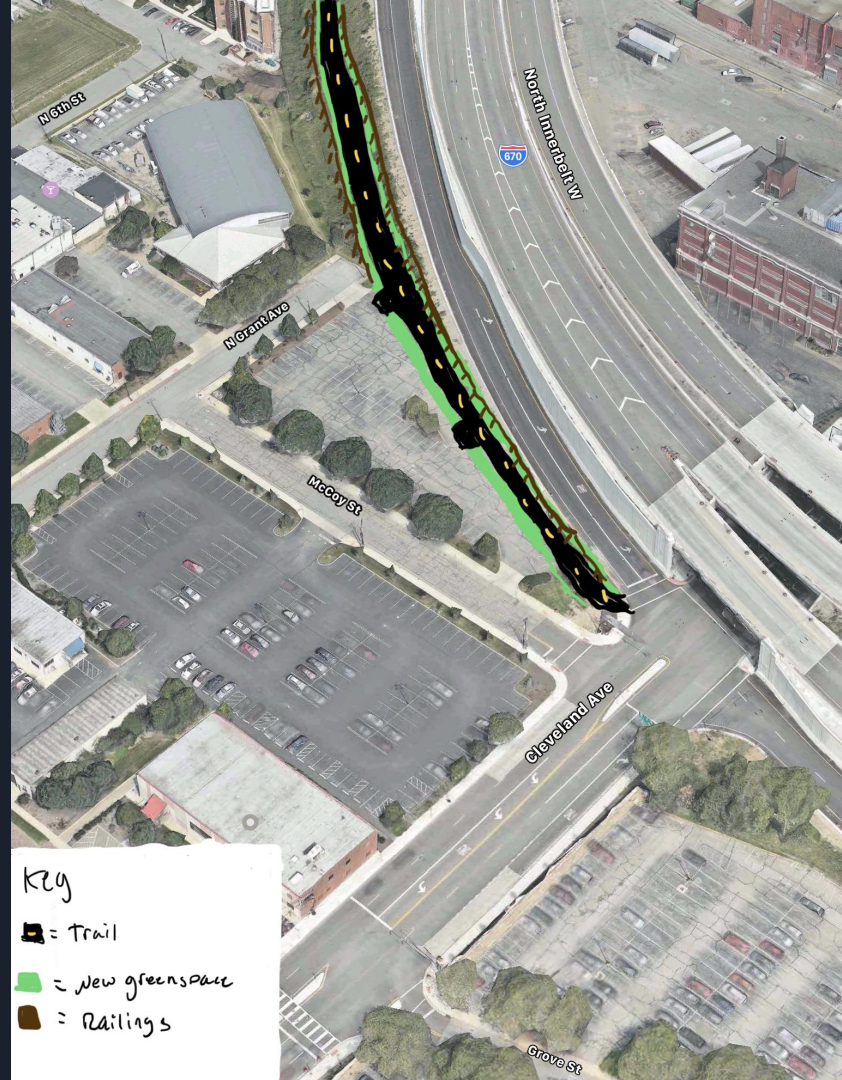
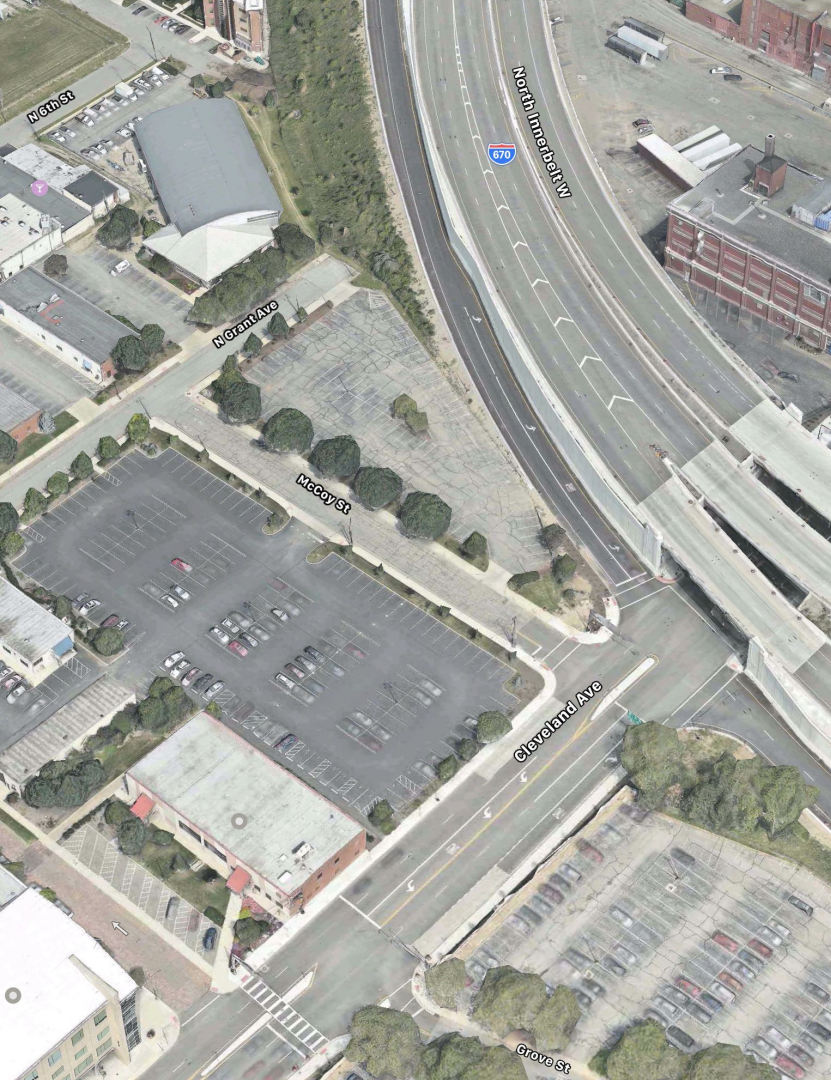
KEY
= Trail
= Barrier
= new greenspace













Key

 = Trail

 = New greenspace

 = Railings



Impact

Connections

More Recreational Areas

New Green Areas

Quicker



The Evaluation

Research/Design and Presentation are worth 30 points. Your grade will be based upon three main factors:

Comprehension and content:

- Did the presentation provide an understanding of the background and significance to the research question being addressed?
- Did the presentation clearly describe the proposed impact and/or potential results of the project?
- Did the presentation follow a clear and logical sequence?
- Did the presenters spend adequate time on each element of their presentation - or did they elaborate for too long on one aspect or was the presentation rushed?

Engagement and communication

- Did the oration make the audience want to know more?
- Was the presenter careful not to trivialize or generalize their project?
- Did the presenters convey enthusiasm for their project?
- Did the presenters capture and maintain their audience's attention?
- Did the visual presentation enhance the presentation - was it clear, legible, and concise?

Mid-Review Feedback

- Was the group open to feedback?
- Did the group use the feedback provided in the mid review to adjust their proposal