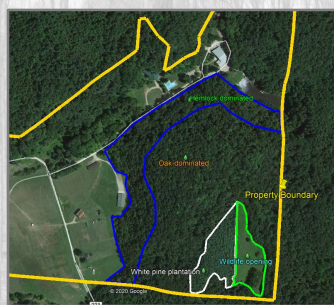


# Mapping Tools Worth Exploring

Mapping Your Woodland - Another Virtual DAY *in the WOODS*  
10/9/2020



**Dave Apsley**

Ohio State University Extension

**Stephanie Downs**

Ohio Department of Natural Resources-  
Division of Forestry

**Eric Hayes**

Athens Soil and Water Conservation District

**CFAES**

**THE OHIO STATE UNIVERSITY**  
COLLEGE OF FOOD, AGRICULTURAL,  
AND ENVIRONMENTAL SCIENCES

1

<http://mylandplan.org>



**CFAES**

2

## My Land Plan

### Pros:

- Free comprehensive package to assist with managing your woodland
- Mapping
  - Parcel boundaries usually available
  - Acreage calculated automatically
- Goals and Activities
- Journaling
- Record Keeping/Task Calendar
- Built in tutorials
- American Forest Foundation & Tree Farm information/ resources

### Cons:

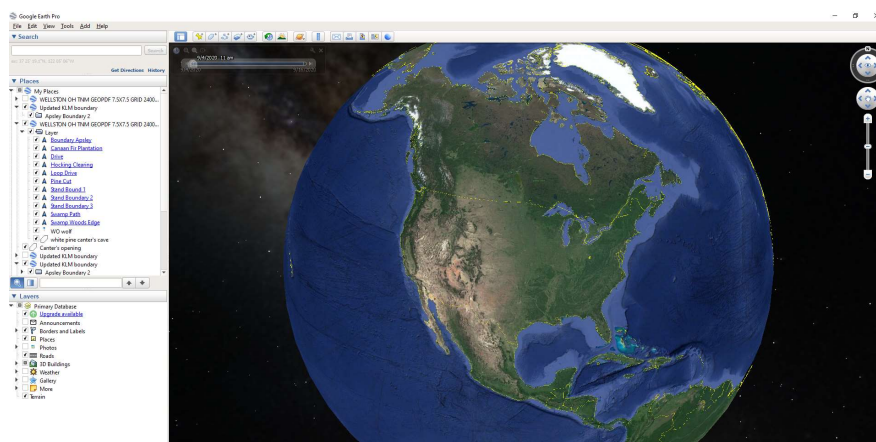
- Inability to import GPS Data directly
- Very limited imagery

<http://mylandplan.org>

**CFAES**

3

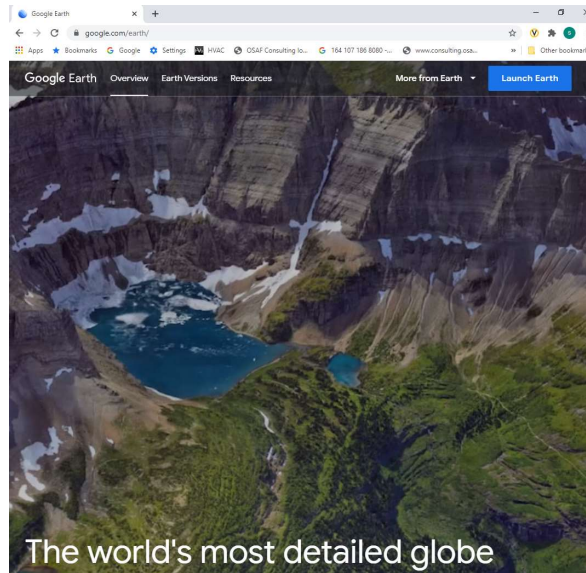
## Google Earth Pro



**CFAES**

4

<http://google.com/earth>



**CFAES**

5

## Google Earth Pro

### Pros:

- Free mapping app for desktop
- Capable of importing and exporting GIS/GPS data
- Historical imagery available

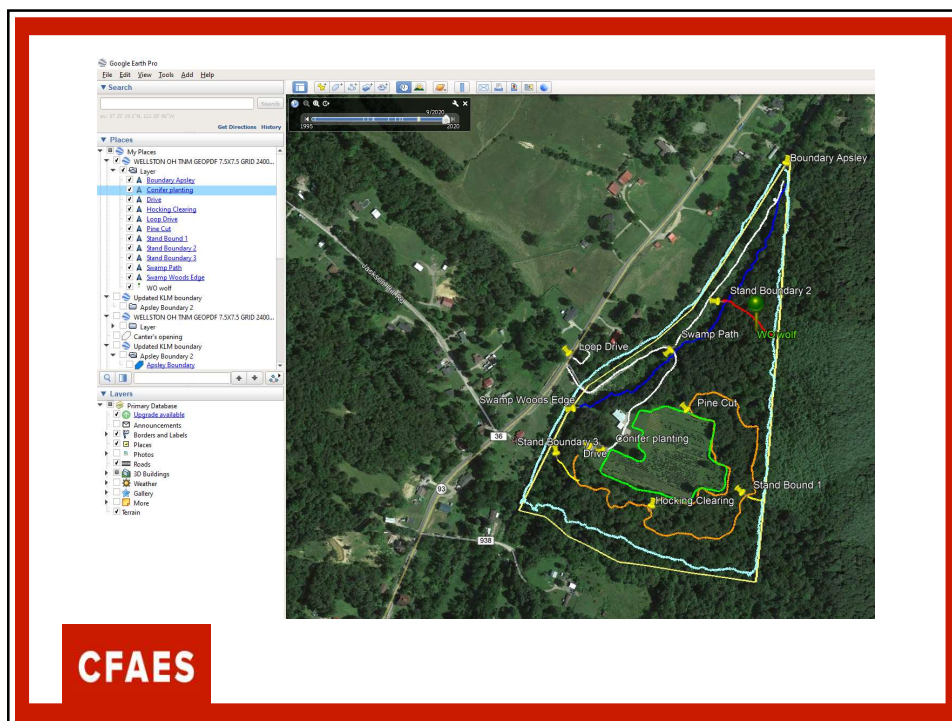
### Cons:

- Parcel boundaries difficult to import
- Other management planning features not available
- More complicated to learn advanced features


<http://mylandplan.org>

**CFAES**

6



7



INDIANA UNIVERSITY

<https://kb.iu.edu/d/arm1>

**Knowledge Base**

Search the Knowledge Base...

### How to access free GIS software

**Note:**

- Indiana University's [software and license agreement](#) with Esri allows students to receive free student versions of ArcGIS software. The agreement also allows faculty, staff, and departments to purchase ArcGIS software at reduced prices from UITS. For more, see [ArcGIS availability at IU](#).
- ArcGIS Desktop and ArcGIS Pro are available for use in Windows-based Student Technology Centers (STCs) at IU Bloomington and IUPUI, and in select departmental labs; they also are available via [IUanyWare](#). Additionally, IU students, faculty, and staff can create ArcGIS Online accounts, enabling web-based access to ArcGIS tools from their desktops, laptops, tablets, and smartphones; for more, see [Create an account for ArcGIS Online at IU](#).

Many GIS and spatial data tools are available without fee to the general public. Following is a short list of applications [UITS](#) recommends:

- GIS applications:**
  - AcquiGlobe** is an easy-to-use tool designed for developing, editing, and viewing GIS data. Custom extensions to expand upon the core, as well as plug-ins that add functionality to the core application, also are available.
  - GeoVIEW-3D** provides an object-oriented approach to 3D visualization, process modeling, and simulation.
  - Geographic Resources Analysis Support System (GRASS)** handles geospatial data management and analysis, image processing, graphics/maps production, spatial modeling, and 3D visualization.
  - Open Source Software Image Map (OSSIM)** is a high-performance software system for remote sensing, image processing, geographical information systems, and photogrammetry. It is written in C++, employing the latest techniques in object-oriented software design. A number of command-line utilities, GUI tools and applications, and integrated systems have been implemented with the baseline. Many of those tools and applications are included with the software releases.
  - QGIS** is the leading open source desktop GIS. QGIS runs on Windows, Mac, and Linux environments.

CFAES

8

<http://qgis.org>

**QGIS**  
A Free and Open Source Geographic Information System

**QGIS 3.14 Pi**  
has been released!

New release: 3.14!  
Get the [installers](#) or [packages](#) for your Operating System and read the [changelog](#).

Create, edit, visualise, analyse and publish geospatial information on Windows, Mac, Linux, BSD and mobile devices  
For your desktop, server, in your web browser and as developer libraries

[Download Now](#) [Support QGIS](#)

Version 3.14.16  
Version 3.10.10 LTR

**CFAES**

PROJECT NEWS

9

<https://www.onxmaps.com/>

**ON X HUNT**

**The onX Hunt App**

Get an edge with the most intelligent and accurate GPS mapping tool for hunters.

[View Pricing](#) [Start Mapping](#)

**Essential maps for Offline maps**

**CFAES**

10



**Contact for A DAY in the WOODS:**

**Dave Apsley**  
**[apsley.1@osu.edu](mailto:apsley.1@osu.edu)**

740-710-3009

**<http://u.osu.edu/seohiowoods>**

**CFAES**