

Here Today & *Hopefully* Gone Tomorrow: Invasive Forest Insects

Amy Stone, Extension Educator, Ohio State University Extension

Jamie Dahl, Forest Outreach Coordinator, Central State University Extension



THE OHIO STATE
UNIVERSITY

COLLEGE OF FOOD, AGRICULTURAL,
AND ENVIRONMENTAL SCIENCES



Central State
University
EXTENSION



Overview:

*Non-Native Tree Pests:
A World-Wide Problem!*

Identify this Moth...



Overview:

*Non-Native Tree Pests:
A World-Wide Problem!*

Identify this Moth...



Overview:

*Non-Native Tree Pests:
A World-Wide Problem!*

**Fall Webworm
Moth**
Hyphantria cunea

**American White
Moth**
Hyphantria cunea



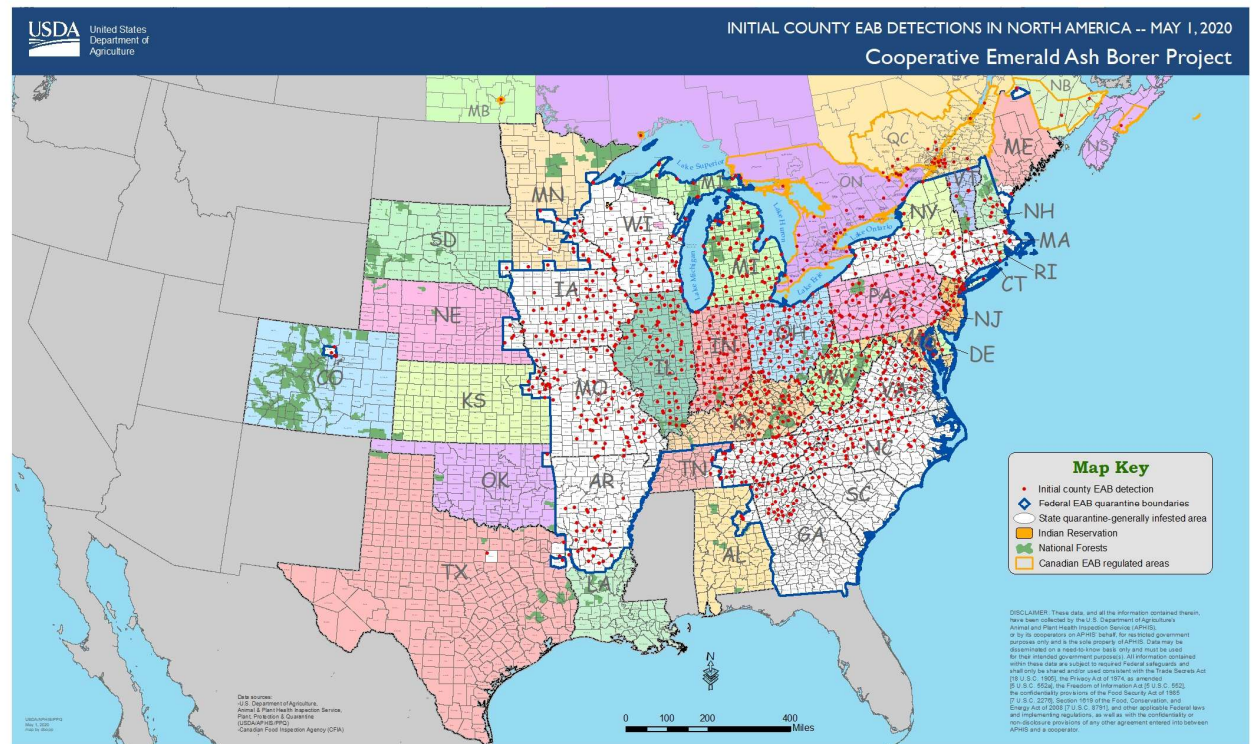
**Native to North America
Detected in China
in 1979**



**Native biocontrols help to
regulate populations:
caterpillars seldom cause
significant harm**

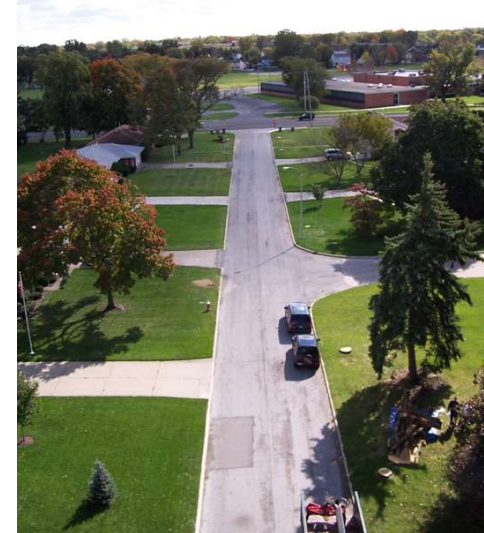
Emerald Ash Borer

Agrilus planipennis



Emerald Ash Borer

Agrilus planipennis



Gypsy Moth

Lymantria dispar



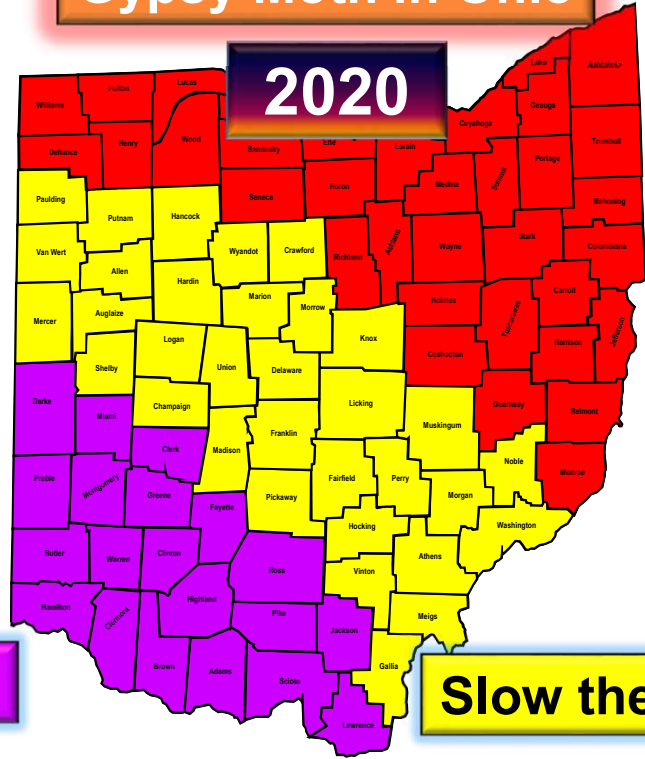
Gypsy Moth

Lymantria dispar



Gypsy Moth in Ohio

2020



Suppression Zone



Eradication

Slow the Spread

JOIN THE BATTLE. BEAT THE BUG.



Spotted Lanternfly

Lycorma delicatula

- Non-native invasive insect
- Native to parts of Asia
- Discovered in southeastern PA in 2014
- Found 15 miles from Ohio border in 2020

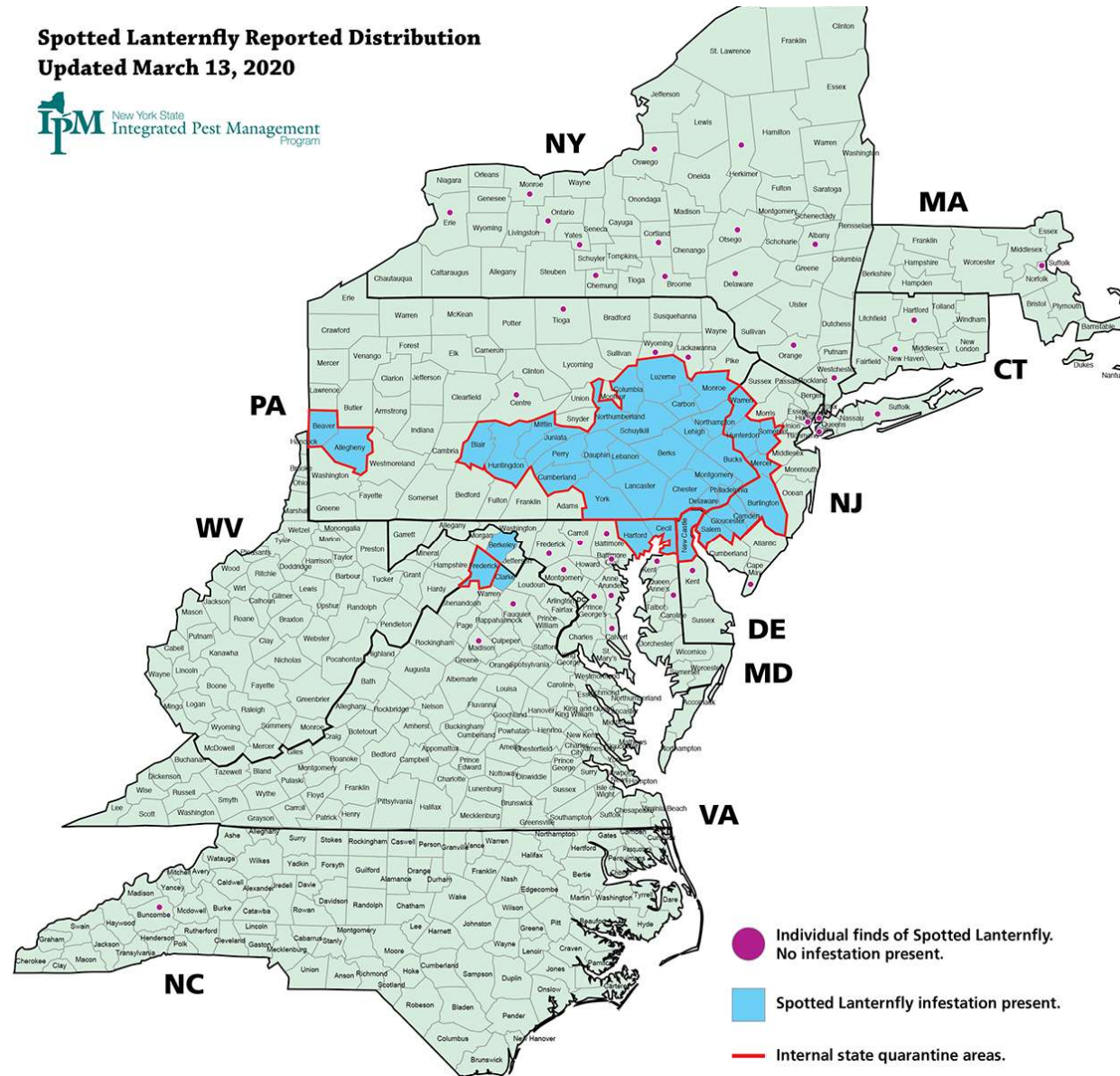


Photo by Mike Friel

IF Found...

- **Report any suspected finds** to the Ohio Department of Agriculture, or local Cooperative Extension Office, or via the Great Lakes Early Detection App.
- Also- check vehicles and objects if traveling
- Do NOT move firewood!

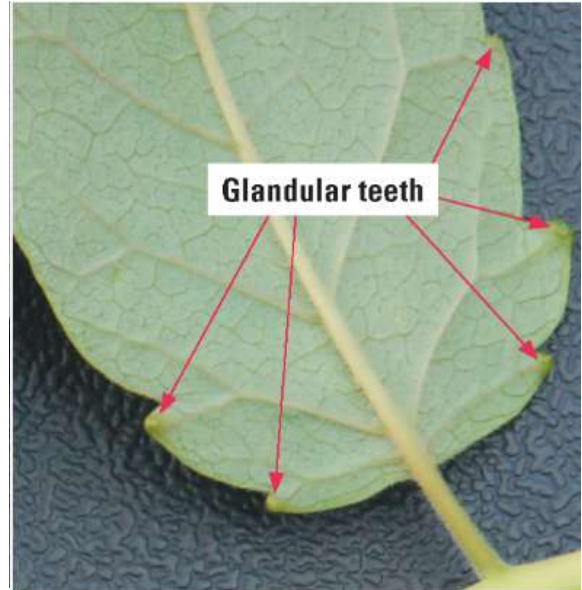
Spotted Lanternfly Reported Distribution Updated March 13, 2020



SLF Preferred Hosts:

- Tree of Heaven (*Ailanthus altissima*)
- Grapes (*Vitis* spp.)





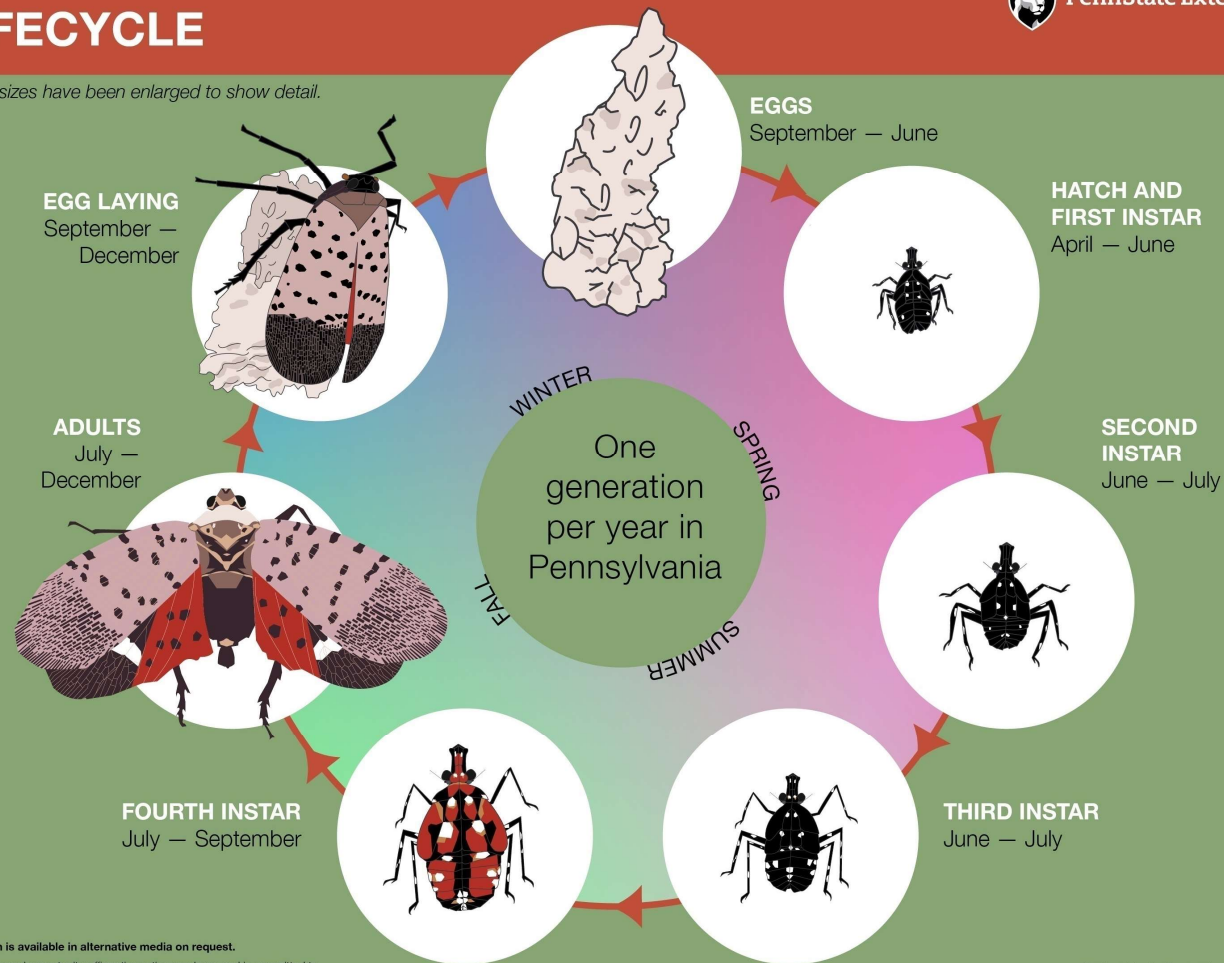
Monitor Tree of Heaven



SPOTTED LANTERNFLY LIFECYCLE



Insect sizes have been enlarged to show detail.



This publication is available in alternative media on request.

Penn State is an equal opportunity, affirmative action employer, and is committed to providing employment opportunities to all qualified applicants without regard to race, color, religion, age, sex, sexual orientation, gender identity, national origin, disability or protected veteran status.

Illustrations by Colleen Witkowski

Produced by Ag Communications and Marketing
© The Pennsylvania State University 2018
CODE 5506 REV3/19pdf

Spotted Lanternfly (SLF)

Life Cycle / Descriptions



- Eggs:
 - Laid then commonly covered with waxy coating
 - Overwintering stage

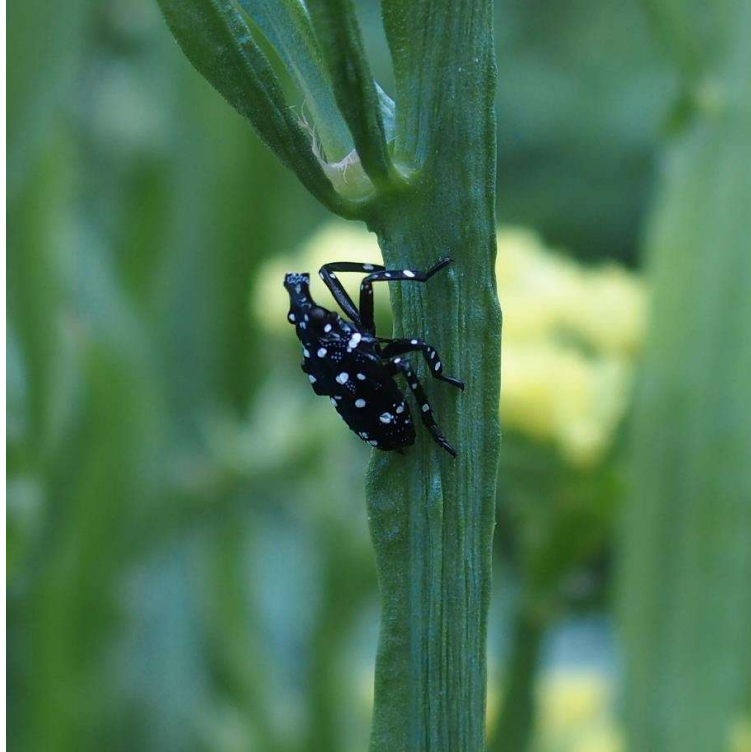
SLF Egg Masses



Egg Masses
1 – 1
1/2 –

Image by Greg Hoover

Gypsy Moth Egg Mass



First to Third Instar:
April through July



Fourth Instar:
July through September

Life Stage Present (One Generation per Year in PA)

The longest stage of the life cycle stage
Most responsible for human-assisted spread

	Jan.	Feb.	March	April	May	June	July	Aug	Sept.	Oct.	Nov.	Dec.
Eggs												
Nymphs												
Adults												

Weak flyers: more like gliders
Responsible for localized spread
Occasional hitchhikers

Source: Penn State Extension



Adults:
July through December



Egg Laying:
September through December

Spotted Lanternfly

Summary for Detection

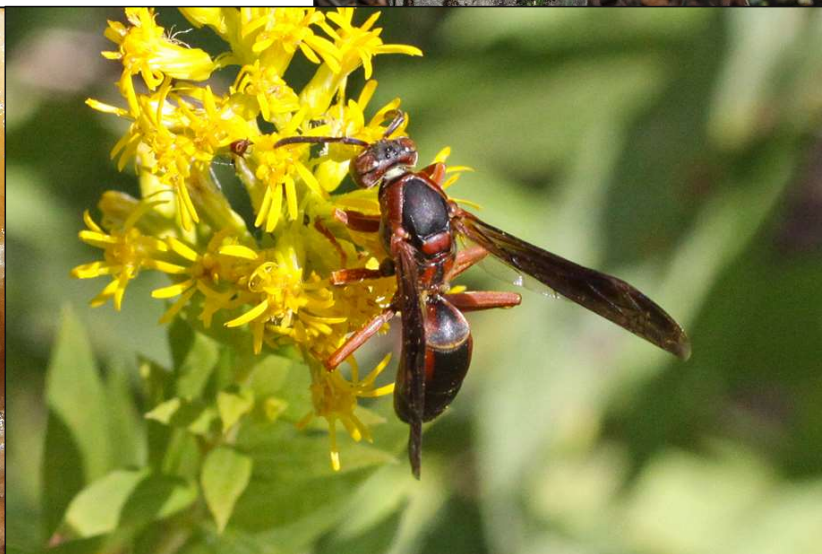


Photo by Mike Frier



© 2014 Vitoria Fortes | www.flickr.com/fortesvitoria

5522648



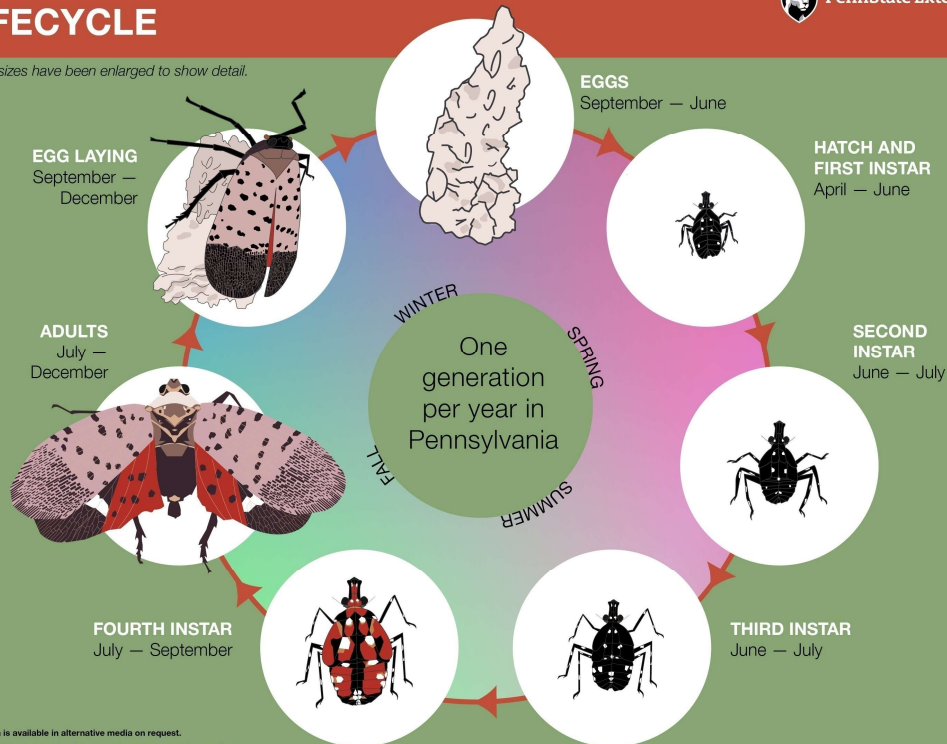
 **Honeydew and Sooty Mold**

SPOTTED LANTERNFLY LIFECYCLE



PennState Extension

Insect sizes have been enlarged to show detail.



This publication is available in alternative media on request.

Penn State is an equal opportunity, affirmative action employer, and is committed to providing employment opportunities to all qualified applicants without regard to race, color, religion, age, sex, sexual orientation, gender identity, national origin, disability or protected veteran status.

Illustrations by Coleen Wilkowiak

Produced by Ag Communications and Marketing

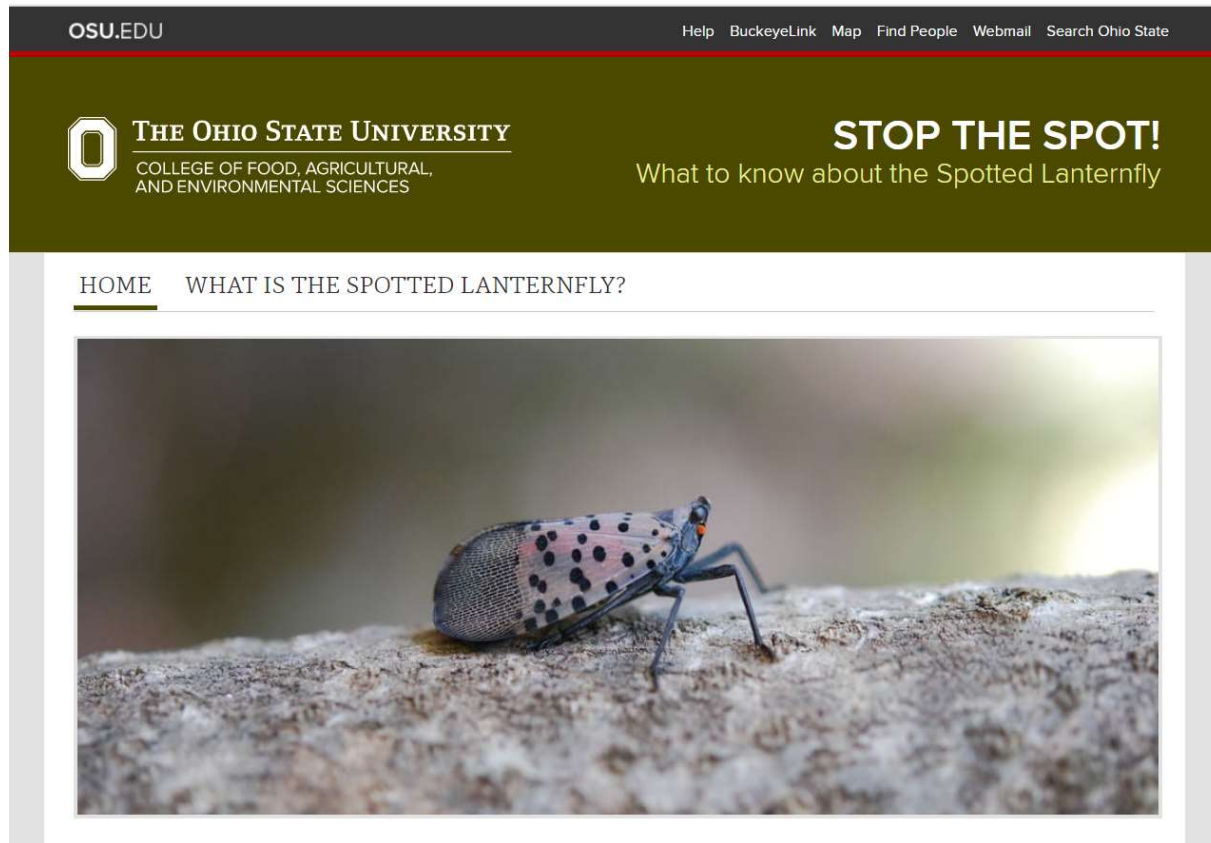
© The Pennsylvania State University 2018

CODE 5506 REV3/19pxff

REMEMBER

- **Report any suspected finds** to the Ohio Department of Agriculture, or local Cooperative Extension Office, or via the Great Lakes Early Detection App.
- Also- check vehicles and objects if traveling
- Do NOT move firewood!
- Seek professional assistance

Designated Website



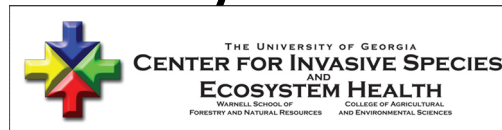
go.osu.edu/
SLF
spottedlanternfly
Spotthespot

SLF Factsheet is now available:
<https://ohioline.osu.edu/factsheet/anr-83>

Penn State Extension offers great
SLF resources:
<https://extension.psu.edu/spotted-lanternfly>

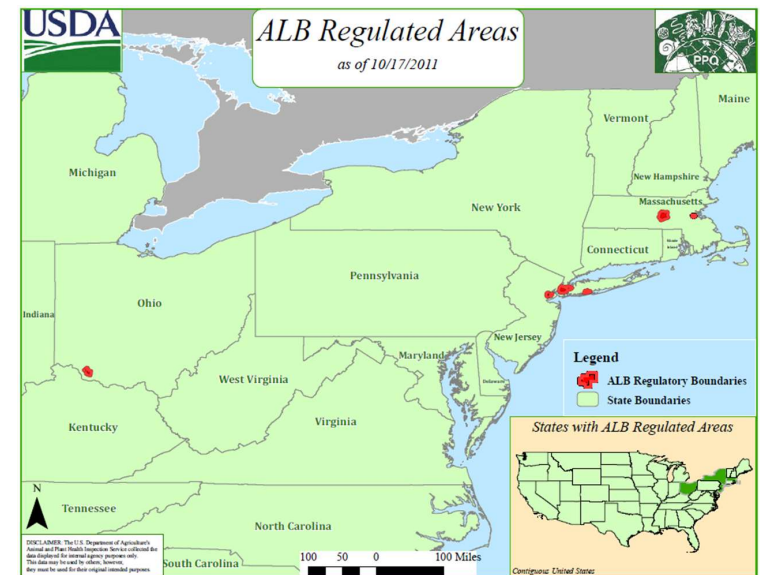
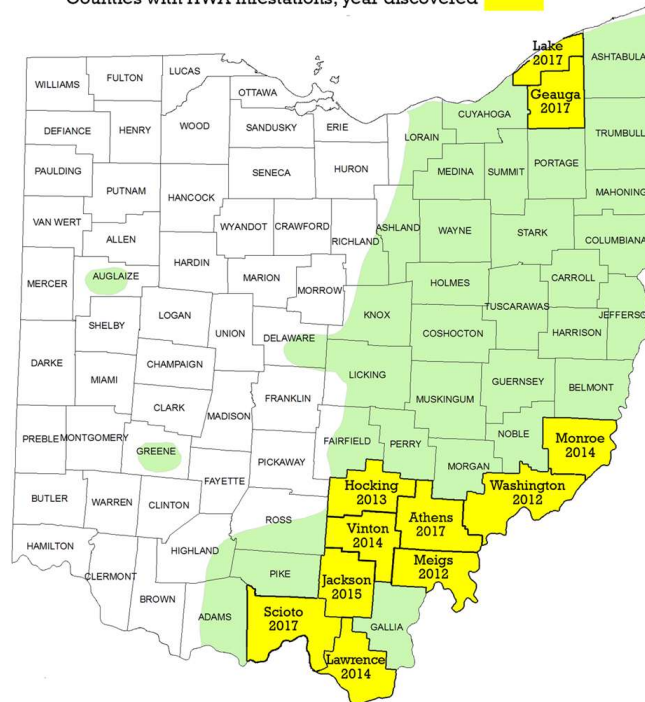
Other invasive pest resources
from ODNR Division of Forestry:
<http://forestry.ohiodnr.gov/>

Great Lakes Early Detection Network App (GLEDN)



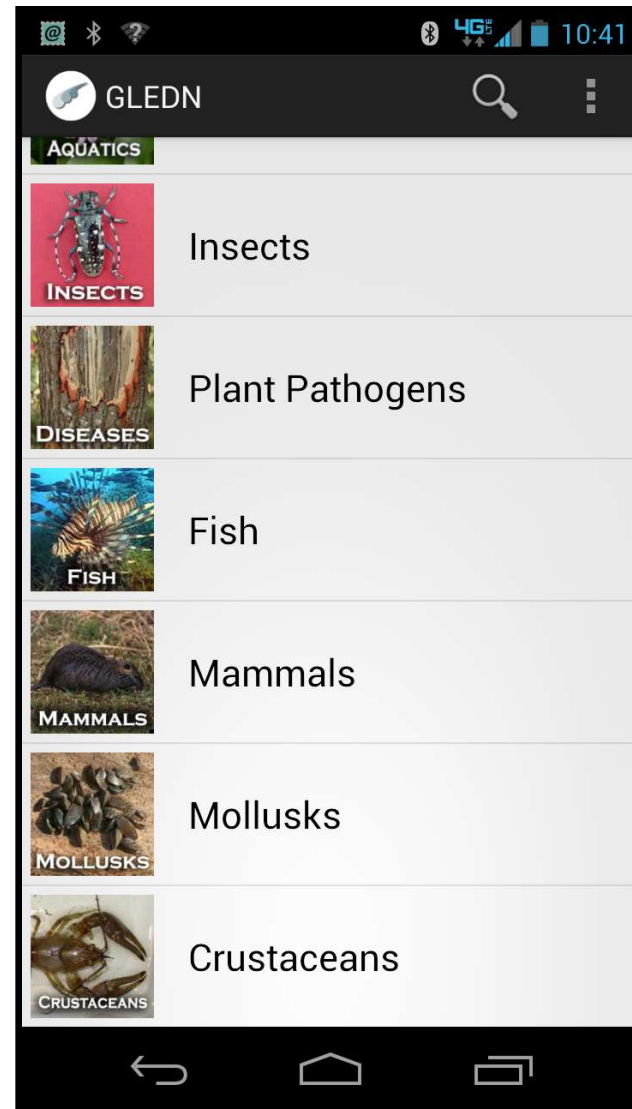
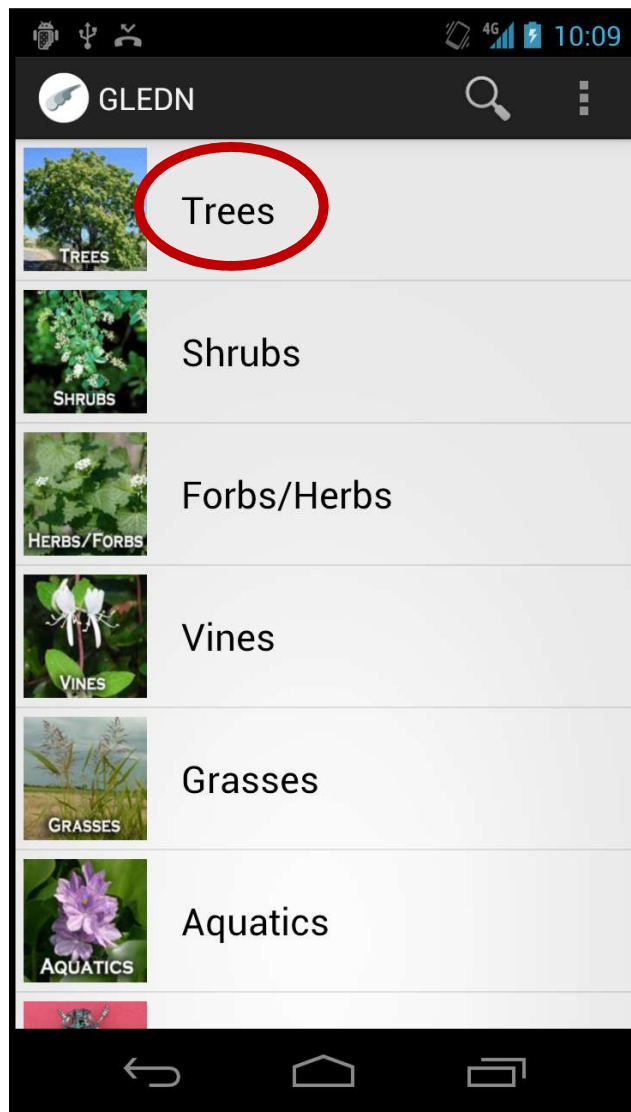
Range of the Eastern Hemlock Tree in Ohio

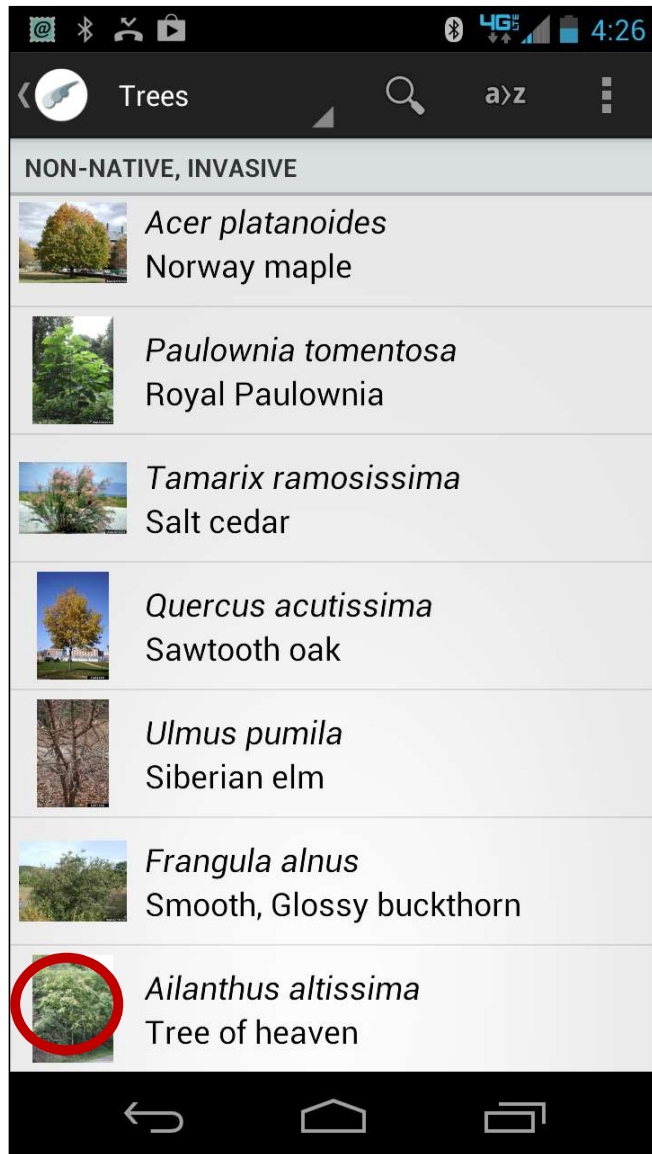
Counties with HWA infestations, year discovered

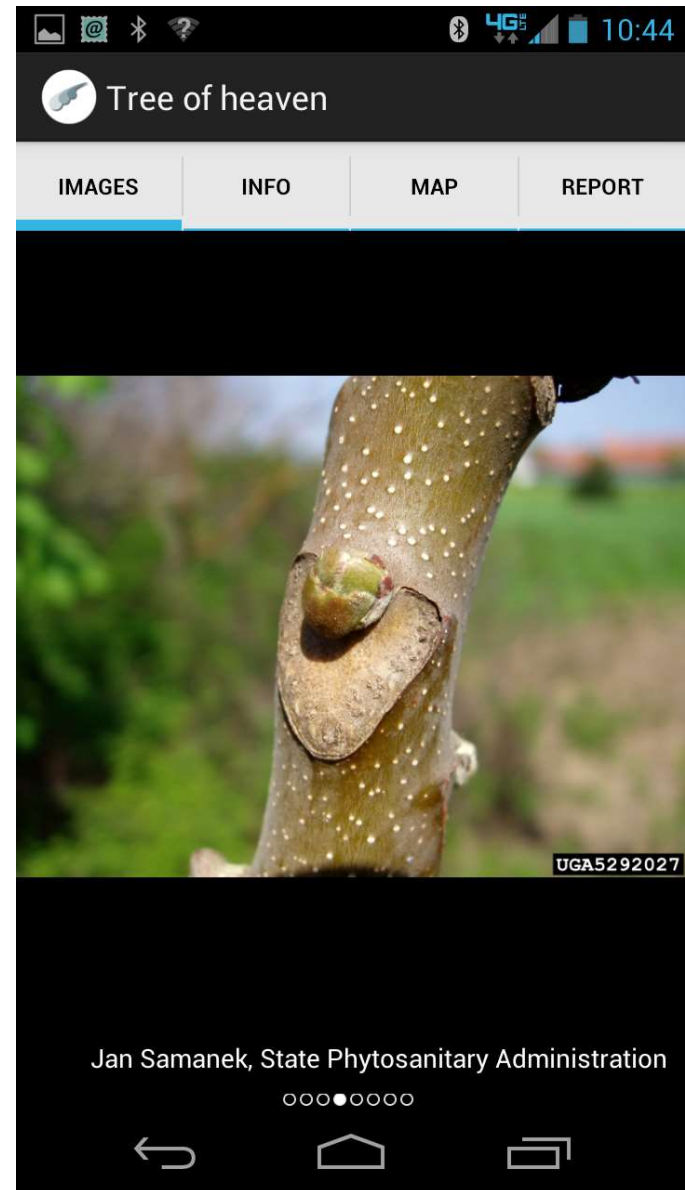


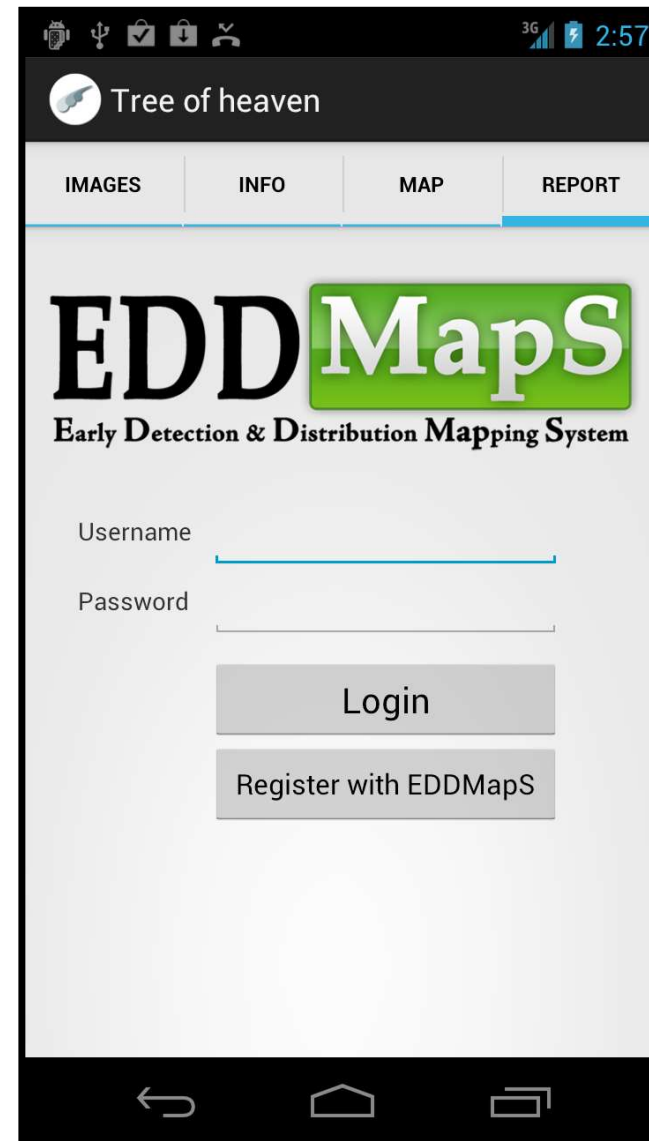
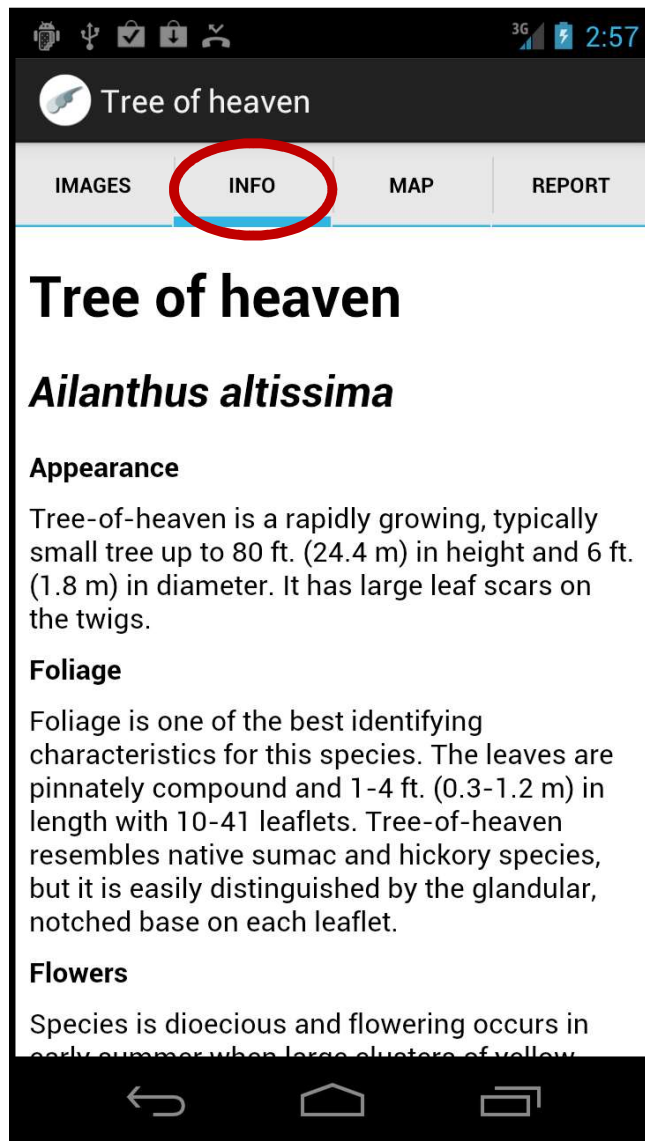
***Ways in which we use the app and
need your help . . .***

- Pest whose population cycles up and down
- Pest that is establishing along a leading edge
- Monitoring pests for new “hot spots” – one that is not established in many locations











Central State
University
EXTENSION



THE OHIO STATE
UNIVERSITY

COLLEGE OF FOOD, AGRICULTURAL,
AND ENVIRONMENTAL SCIENCES

Central State University and Ohio State University both Land-Grant institutions, offer their programs and activities to people of diverse backgrounds, and do not discriminate on the basis of age, ancestry, color, disability, gender identity or expression, genetic information, HIV/AIDS status, marital or family status, military status, national origin, political beliefs, race, religion, sex, sexual orientation, or veteran status. The Universities are Equal Opportunity/Affirmative Action institutions.

For inquiries regarding non-discrimination policies or accessibility, please contact Human Resources at 937-376-6540 or Land-Grant Programs at 937-376-6676.

Questions? Please reach out to us!



Jamie Dahl

jdahl@centralstate.edu

740-279-0656

Amy Stone

stone.91@osu.edu

OSU Extension