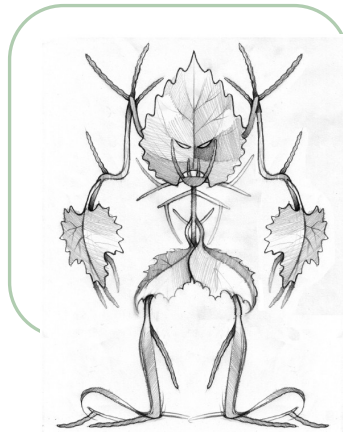


SO YOU KNOW YOU HAVE INVASIVE PLANTS, NOW WHAT?



MANAGING INVASIVES IN SOUTHEAST OHIO

HOCKING HILLS STATE PARK LODGE, 19852 STATE ROUTE 664 S, LOGAN



The Ohio Invasive Plants Council invites you to attend a workshop to learn more about:

- ⇒ Invasive plants that threaten the Hocking Hills region and control strategies
- ⇒ Native plant alternatives and restoration techniques
- ⇒ The Great Lakes Early Detection Network

Field trips to Hocking Hills parks and preserves will be offered.

A \$10 fee will cover lunch and materials for those that pre-register.

Visit OIPC.INFO to sign up. Space is limited, so don't delay!

MAY 21, 2014

TIME: 9:30AM-3:30PM

Partners include:



Crane Hollow Preserve

