

The Energy of Nature

Connecting Utility Corridors with Conservation

First Energy, TransCanada, and Columbia Gas are campus conservation partners through management of rights-of-way (ROW) vegetation.



Utility companies provide safe and reliable service to modern society, but some types of plants, like tall-growing trees and invasive shrubs, work against that mission. Problem plants are called incompatibles and can be controlled through various means. But the focus is no longer only on eliminating incompatibles. Integrated Vegetation Management (IVM) encourages beneficial plants on utility corridors.

A few tools used to maintain and enhance utility corridors:



Sprayer



Brush Hog



Hand Planting Plugs

On wider corridors, multiple conservation objectives can be merged using the wire zone-border zone approach. One single ROW might provide:



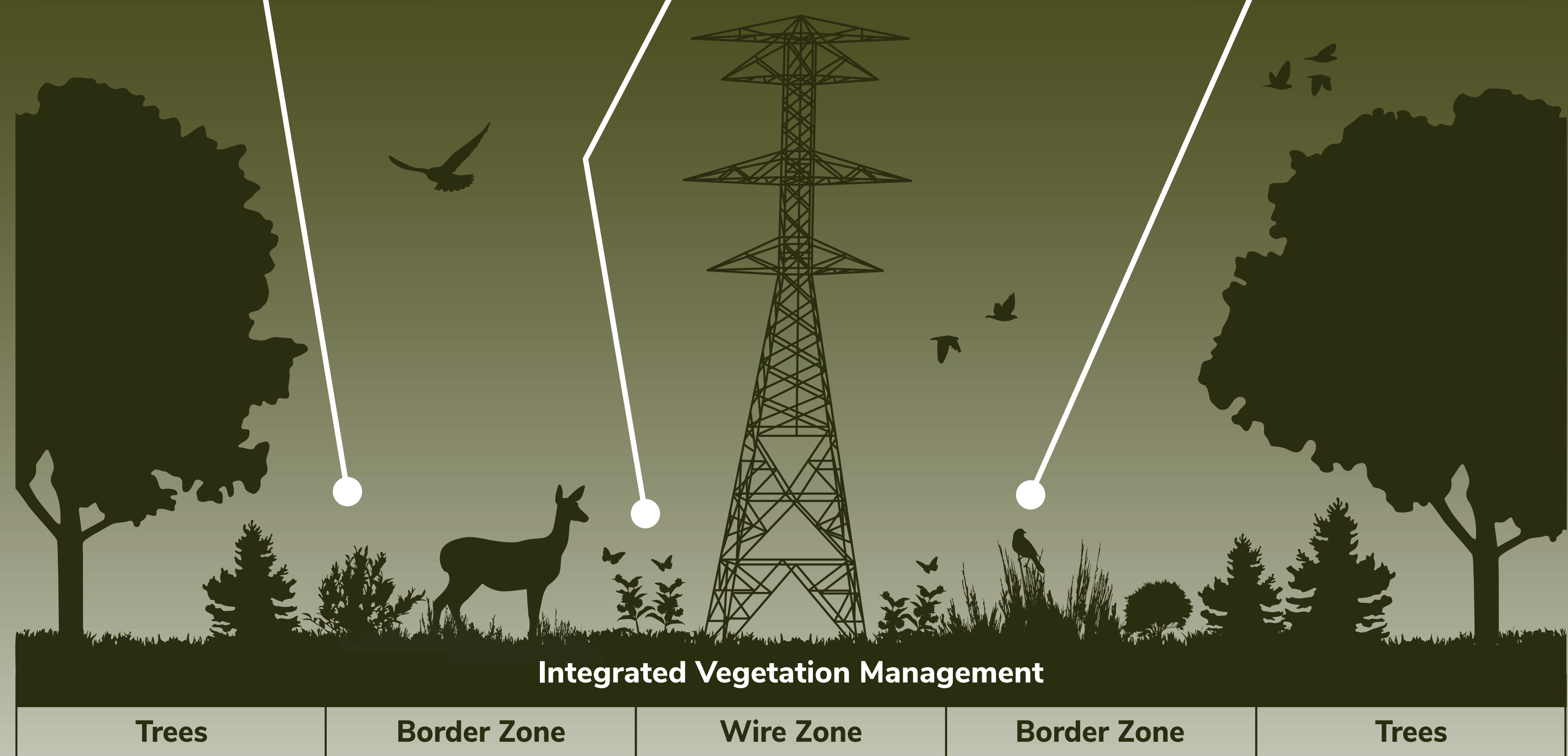
Native shrubs that never grow too tall provide berries for wildlife



Wildflowers that benefit pollinators



Native warm season grasses for songbird nesting cover



Partnering with utility companies can create ideal homes for native plants and wildlife and are a great example of doing conservation within working lands. This First Energy ROW was placed under IVM in 2014 and provides habitat for species like monarch butterflies and eastern towhees.

In the campus core, you can visit the pollinator plantings to learn more about how you can create habitat and be part of the conservation solution.